



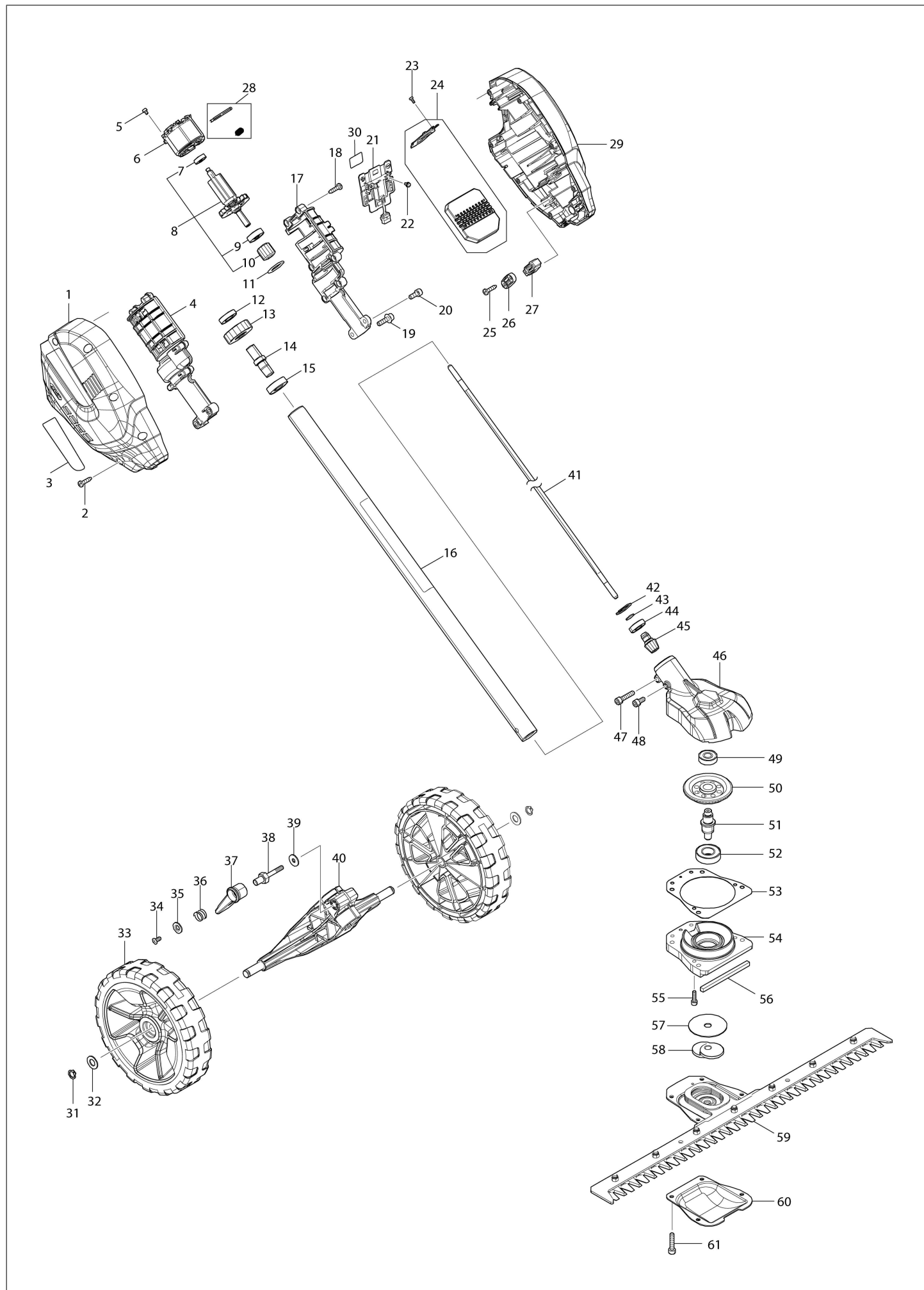
# Diagram / Parts List

**UG001G**

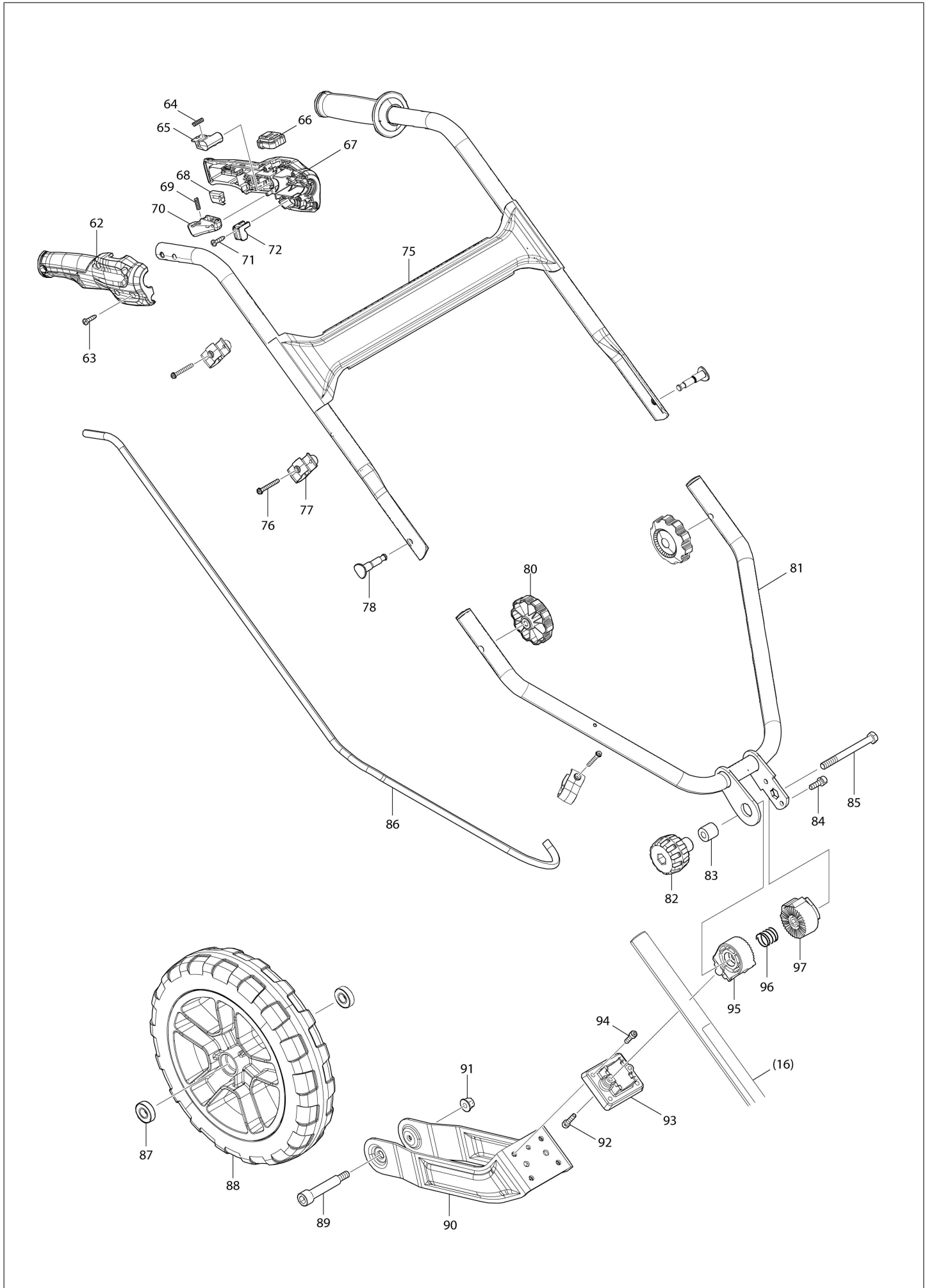
**CORDLESS GROUND TRIMMER**



# (IN) UG001G / CORDLESS GROUND TRIMMER



(IN) UG001G / CORDLESS GROUND TRIMMER



|           |              |
|-----------|--------------|
| <b>IN</b> | <b>INDIA</b> |
|-----------|--------------|

## UG001G / CORDLESS GROUND TRIMMER

| Item | Sub | Parts No. | Parts Description               | Qty | I/C | E/C No. | Close No. | Remark |
|------|-----|-----------|---------------------------------|-----|-----|---------|-----------|--------|
| 001  |     | 1832G1-5  | HOUSING SET                     | 1   |     |         |           |        |
|      | C10 | 263005-3  | Rubber pin 6                    | 2   |     |         |           |        |
|      | D10 |           | INC. 29                         |     |     |         |           |        |
| 002  |     | 266326-2  | Binding head tapping screw 4X18 | 7   |     |         |           |        |
| 003  |     | 8155B8-3  | UG001G NAME PLATE               | 1   |     |         |           |        |
| 004  |     | 183X80-6  | Motor housing set               | 1   |     |         |           |        |
|      | D10 |           | INC. 17                         |     |     |         |           |        |
| 005  |     | 652069-6  | Flat head screw M3X6            | 3   |     |         |           |        |
| 006  |     | 629340-3  | Stator                          | 1   |     |         |           |        |
| 007  |     | 210235-7  | Ball bearing 625ZZ              | 1   |     |         |           |        |
| 008  |     | 519940-6  | ROTOR ASS'Y                     | 1   |     |         |           |        |
|      | D10 |           | INC. 7,9,10                     |     |     |         |           |        |
| 009  |     | 210236-5  | Ball bearing 627ZZ              | 1   |     |         |           |        |
| 010  |     | 227A68-9  | Helical gear 16                 | 1   |     |         |           |        |
| 011  |     | 213925-1  | O-ring 21                       | 1   |     |         |           |        |
| 012  |     | 210243-8  | Ball bearing 6901ZZ             | 1   |     |         |           |        |
| 013  |     | 227848-7  | Helical gear 33                 | 1   |     |         |           |        |
| 014  |     | 327719-9  | Spindle hub                     | 1   |     |         |           |        |
| 015  |     | 210244-6  | Ball bearing 6001ZZ             | 1   |     |         |           |        |
| 016  |     | 1413D3-2  | SHAFT PIPE COMPLETE A           | 1   |     |         |           |        |
|      | C10 | 8098V2-3  | CAUTION LABEL                   | 1   |     |         |           |        |
| 017  |     | 183X80-6  | Motor housing set               | 1   |     |         |           |        |
|      | D10 |           | INC. 4                          |     |     |         |           |        |
| 018  |     | 266326-2  | Binding head tapping screw 4X18 | 6   |     |         |           |        |
| 019  |     | 922234-4  | Hex. socket head bolt M5X20 WG  | 2   |     |         |           |        |
| 020  |     | 922216-6  | Hex. socket head bolt M5X14 W   | 1   |     |         |           |        |
| 021  |     | 632W79-7  | TERMINAL UNIT                   | 1   |     |         |           |        |
| 022  |     | 652031-1  | Pan head screw M3X6             | 2   |     |         |           |        |
| 023  |     | 266490-9  | Pan head tapping screw 2X6      | 3   |     |         |           |        |
| 024  |     | 620T54-7  | CONTROLLER                      | 1   |     |         |           |        |
| 025  |     | 266326-2  | Binding head tapping screw 4X18 | 2   |     |         |           |        |
| 026  |     | 687123-7  | Strain relief                   | 1   |     |         |           |        |
| 027  |     | 687051-6  | Strain relief                   | 1   |     |         |           |        |
| 029  |     | 1832G1-5  | HOUSING SET                     | 1   |     |         |           |        |
|      | C10 | 263005-3  | Rubber pin 6                    | 2   |     |         |           |        |
|      | D10 |           | INC. 1                          |     |     |         |           |        |
| 030  |     | 8155C2-2  | UG001G SERIAL NO. LABEL         | 1   |     |         |           |        |
| 031  |     | 961006-2  | Retaining ring (EXT) S-10       | 2   |     |         |           |        |
| 032  |     | 253828-7  | Flat washer 10                  | 2   |     |         |           |        |
| 033  |     | 4135D5-3  | WHEEL 180                       | 2   |     |         |           |        |
| 034  |     | 265135-6  | Countersunk head screw M4X10    | 1   |     |         |           |        |
| 035  |     | 347577-7  | Washer 6                        | 1   |     |         |           |        |
| 036  |     | 234347-2  | Compression spring 11           | 1   |     |         |           |        |
| 037  |     | 271477-8  | LEVER 53                        | 1   |     |         |           |        |
| 038  |     | 265E61-9  | HEX.BOLT M5X32                  | 1   |     |         |           |        |
| 039  |     | 253047-5  | Flat washer 6                   | 1   |     |         |           |        |
| 040  |     | 4133U0-0  | WHEEL HOLDER 300                | 1   |     |         |           |        |
| 041  |     | 327G55-5  | SHAFT A                         | 1   |     |         |           |        |
| 042  |     | 962102-9  | Retaining ring (INT) R-22       | 1   |     |         |           |        |
| 043  |     | 961036-3  | Retaining ring (EXT) WR-10      | 1   |     |         |           |        |
| 044  |     | 210167-8  | Ball bearing 6900LLB            | 1   |     |         |           |        |
| 045  |     | 227A88-3  | Spiral bevel gear 11            | 1   |     |         |           |        |
| 046  |     | 141S15-3  | Gear housing complete           | 1   |     |         |           |        |
| 047  |     | 922241-7  | Hex. socket head bolt M5X25 W   | 1   |     |         |           |        |
| 048  |     | 922211-6  | Hex. socket head bolt M5X12 W   | 1   |     |         |           |        |
| 049  |     | 211493-8  | Ball bearing 609DDW             | 1   |     |         |           |        |
| 050  |     | 227A89-1  | Spiral bevel gear 52            | 1   |     |         |           |        |
| 051  |     | 327C06-4  | Spindle                         | 1   |     |         |           |        |
| 052  |     | 211247-3  | Ball bearing 6002DDW            | 1   |     |         |           |        |
| 053  |     | 422A36-9  | Gasket                          | 1   |     |         |           |        |
| 054  |     | 141S16-1  | Gear housing cover complete     | 1   |     |         |           |        |
| 055  |     | 922126-7  | Hex. socket head bolt M4X16 W   | 4   |     |         |           |        |
| 056  |     | 422A37-7  | Dust guard                      | 1   |     |         |           |        |
| 057  |     | 347B34-7  | Friction plate U                | 1   |     |         |           |        |
| 058  |     | 327C07-2  | Crank                           | 1   |     |         |           |        |

Interchange  
O : Yes  
X : No  
< : the new part can be substituted for the current.  
> : the current part can be substituted for the new.  
S : Interchangeable as a set.

