



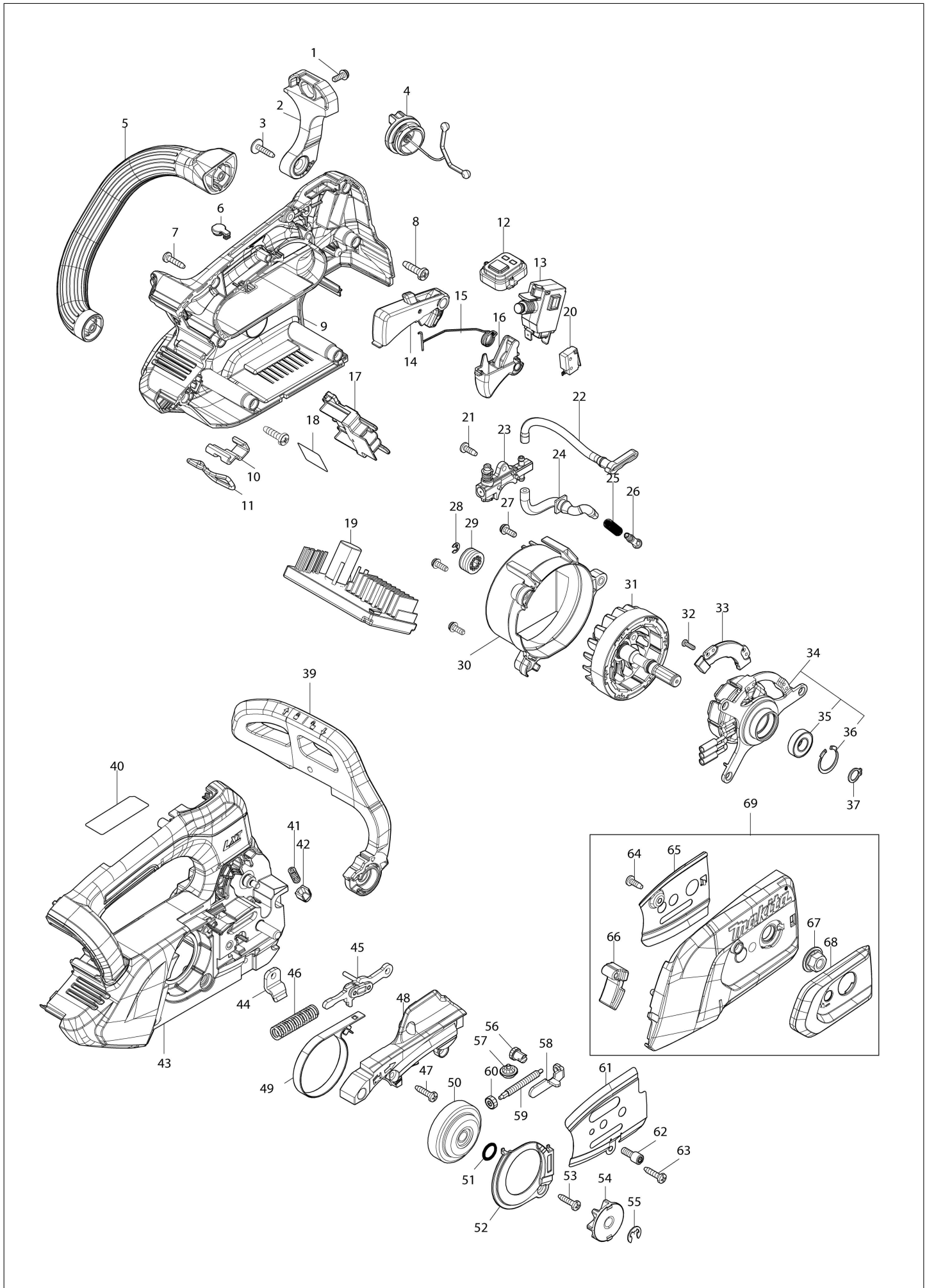
Diagram / Parts List

DUC258

Cordless Chain Saw



(IN) DUC258 / Cordless Chain Saw



IN	INDIA
-----------	--------------

DUC258 / Cordless Chain Saw

Item	Sub	Parts No.	Parts Description	Qty	I/C	E/C No.	Close No.	Remark
001		911118-1	Pan head screw M4X12 WR	1				
002		4134A4-8	FRONT HAND GUARD RETAINER	1				
003		265620-9	Flange tapping screw 4X18	1				
004		162E50-4	TANK CAP COMPLETE	1				
	C10	213B01-3	O-RING 25	1				
005		4134A7-2	SIDE HANDLE	1				
006		422467-6	Cap	1				
007		266326-2	Binding head tapping screw 4X18	8				
008		266420-0	Binding head tapping screw 5X20	2				
009		1832D8-0	HOUSING SET	1				
	C10	263005-3	Rubber pin 6	2				
	C20	8095H7-7	CAUTION LABEL	1				
	D10		INC. 6,43					
010		347E26-4	HOOK SUPPORT	1				
011		327F97-3	HOOK	1				
012		620S35-5	SWITCH CIRCUIT	1				
013		651365-9	Switch C3JW-6BM-P	1				
014		1413D6-6	LOCK OFF LEVER COMPLETE	1				
015		232867-0	Torsion spring 10	1				
016		459282-5	Switch lever	1				
017		643874-2	Terminal	1				
018		8153W0-4	DUC258 SERIAL NO. LABEL	1				
019		620S58-3	CONTROLLER	1				
020		632W82-8	SWITCH UNIT	1				
021		266427-6	Binding head tapping screw 4X12	1				
022		422D25-2	OIL TUBE 3-106	1				
023		1412G6-1	OIL PUMP COMPLETE	1				
024		422D02-4	OIL TUBE 3-56	1				
025		231975-4	Spring	1				
026		452666-6	Nipple	1				
027		911118-1	Pan head screw M4X12 WR	3				
028		961011-9	Stop ring (EXT) E-4	1				
029		226884-0	Worm gear	1				
030		4134A6-4	MOTOR COVER	1				
031		619925-3	ROTOR	1				
032		265C89-5	Flat head screw M3X10	2			E2966	
032-1		265F08-9	FLAT HEAD SCREW M3X10	2	O	E2966		
033		620S36-3	CONTROLLER B	1				
034		520211-6	STATOR ASS'Y	1				
	D10		INC. 35,36					
035		210258-5	Ball bearing 6900DDW	1				
036		962112-6	Retaining ring (INT) round R-22	1				
037		961006-2	Retaining ring (EXT) S-10	1				
039		4134A3-0	FRONT HAND GUARD	1				
040		8153V9-9	DUC258 NAME PLATE	1				
041		232453-7	Compression spring 3	1				
042		313672-5	HAND GUARD GUIDE	1				
043		1832D8-0	HOUSING SET	1				
	C10	263005-3	Rubber pin 6	2				
	C20	8095H7-7	CAUTION LABEL	1				
	D10		INC. 6,9					
044		347373-3	Chain catcher	1				
045		1412B7-4	LINK PLATE COMPLETE	1				
046		232452-9	Compression spring 7	1				
047		266326-2	Binding head tapping screw 4X18	4				
048		4134A9-8	HOUSING R COVER A	1				
049		347E27-2	BRAKE BAND	1			E2961	
049-1		347F39-1	BRAKE BAND	1	<	E2961		
050		162E19-8	BRAKE DRUM COMPLETE	1			E3536	
050-1		162E85-5	BRAKE DRUM COMPLETE	1	<	E3536		
051		213060-5	O-ring 10	1				
052		4133T6-1	HOUSING R COVER B	1				
053		266326-2	Binding head tapping screw 4X18	1				
054		1916N6-4	SPROCKET 7 SET	1				
055		961013-5	Stop ring (EXT) E-7	1				

A:DUC258RTE(H)

Interchange

O : Yes

X : No

< : the new part can be substituted for the current.

> : the current part can be substituted for the new.

S : Interchangeable as a set.

