



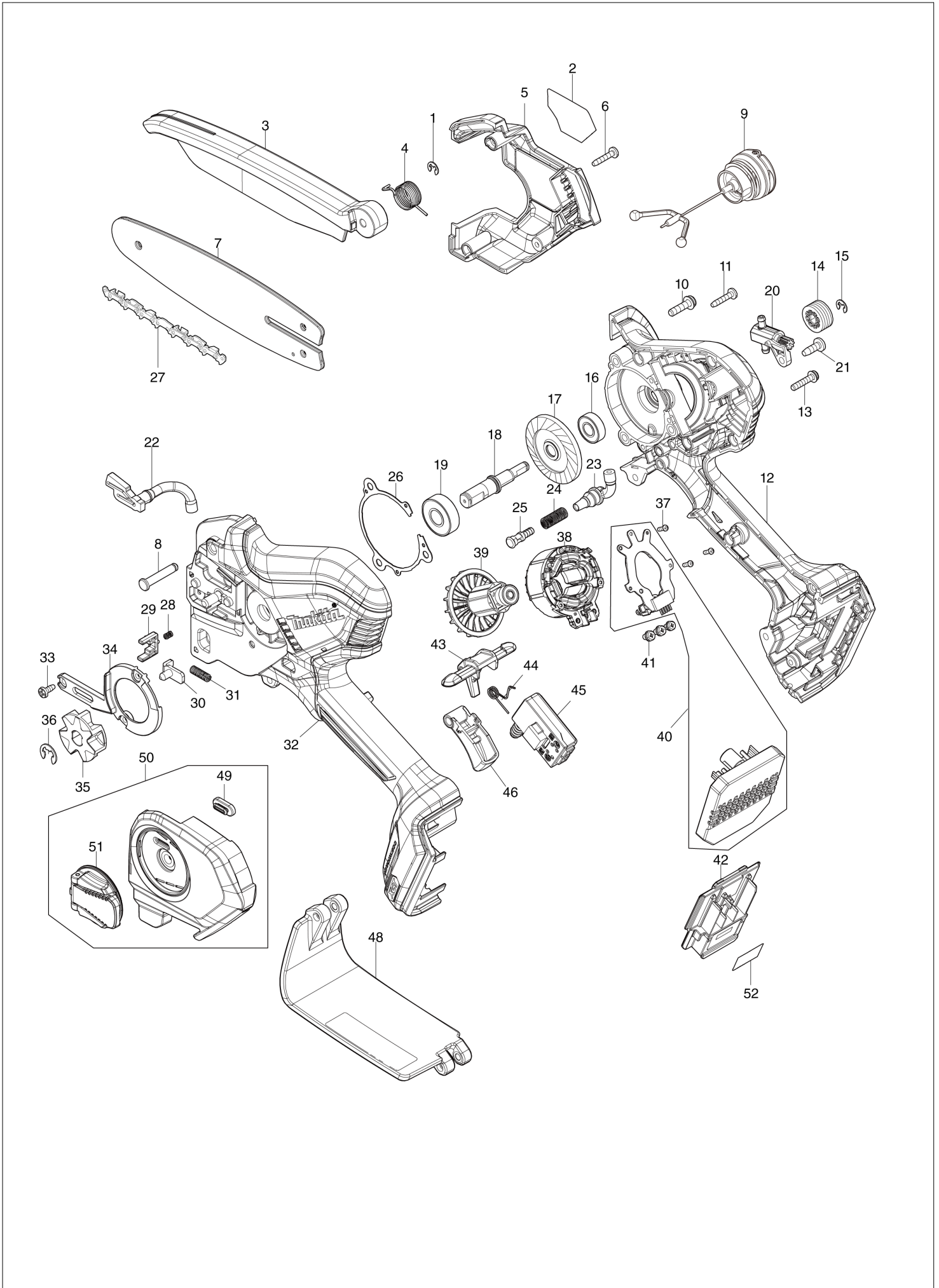
Diagram / Parts List

UC029G

150MM CORDLESS PRUNING SAW



(IN) UC029G / 150MM CORDLESS PRUNING SAW



IN	INDIA
----	-------

UC029G / 150MM CORDLESS PRUNING SAW

Item	Sub	Parts No.	Parts Description	Qty	I/C	E/C No.	Close No.	Remark
001		961011-9	STOP RING E-4	1				
002		8148C7-7	UC029G NAME PLATE	1				
003		413T68-1	SAFETY COVER	1				
004		232785-2	TORSION SPRING 14	1				
005		4131K3-2	HOUSING R COVER	1				
006		266429-2	TAPPING SCREW 3X16	3				
007		1912F1-4	GUIDE BAR 6 SET	1				
008		256A31-5	SHOULDER PIN 5	1				
009		126832-8	TANK CAP ASSEMBLY	1				
	C10	213A11-4	O-RING 25	1				
010		911128-8	P.H.SCREW M4X16 WITH WR	3				
011		266429-2	TAPPING SCREW 3X16	7				
012		1831A3-3	HOUSING SET	1				
	C10	263005-3	RUBBER PIN 6	2				
	C20	252126-6	HEX. LOCK NUT M4-7	1				
	D10		INC. 32					
013		911138-5	P.H.SCREW M4X20 WITH WR	2				
014		226884-0	WORM GEAR	1				
015		961011-9	STOP RING E-4	1				
016		211166-3	BALL BEARING 698DDW	1				
017		227A17-6	SPIRAL BEVEL GEAR 53	1				
018		327A89-2	SPINDLE	1				
019		210059-1	BALL BEARING 6000DDW	1				
020		141N25-0	OIL PUMP COMPLETE	1				
021		266427-6	TAPPING SCREW 4X12	1				
022		422968-4	OIL TUBE 3-60	1				
023		422969-2	OIL TUBE 3-25	1				
024		232774-7	COMPRESSION SPRING 6	1				
025		413L02-3	NIPPLE	1				
026		422B95-9	GASKET	1				
027		1912E8-3	SAW CHAIN 6 SET	1				
028		233211-4	COMPRESSION SPRING 2	1				
029		413M02-9	STOPPER	1				
030		347A69-2	TENSION SLIDE	1				
031		232907-4	COMPRESSION SPRING 4	1				
032		1831A3-3	HOUSING SET	1				
	C10	263005-3	RUBBER PIN 6	2				
	C20	252126-6	HEX. LOCK NUT M4-7	1				
	D10		INC. 12					
033		266492-5	TAPPING SCREW 3X8	3				
034		4131L0-5	COVER	1				
035		1911W5-9	SPROCKET 7 SET	1				
036		961013-5	STOP RING E-7	1				
037		266490-9	TAPPING SCREW PT 2X6	3				
038		629C88-5	STATOR	1				
039		619881-7	ROTOR	1				
040		620R16-3	CONTROLLER	1				
041		652069-6	FLAT HEAD SCREW M3X6	3				
042		632W07-2	TERMINAL UNIT	1				
043		413L98-4	LOCK OFF LEVER	1				
044		232784-4	TORSION SPRING 6	1				
045		632V97-9	SWITCH UNIT	1				
046		413L97-6	SWITCH LEVER	1				
048		1410H0-8	REAR HAND GUARD COMPLETE	1				
	C10	8081K5-5	CAUTION LABEL	1				
049		422970-7	GROMMET	1				
050		1831F0-4	SPROCKET COVER SET	1				
	C10	8085Y3-1	INDICATION LABEL	1				
	D10		INC. 49,51					
051		1410G9-3	NUT COMPLETE	1				
052		8148C9-3	UC029G SERIAL NO. LABEL	1				
A01		D-70948	FILE HOLDER SET 4.0MM(5/32")	1				
A02		199897-3	OIL VESSEL SET	1				
A03		413T67-3	GUIDE BAR CASE 175	1				
A04B		821552-6	CONNECTOR PLASTIC CASE (TYPE4)	1				

A:UC029GZ(N)
B:UC029GM201(H)

Interchange
O : Yes
X : No
< : the new part can be substituted for the current.
> : the current part can be substituted for the new.
S : Interchangeable as a set.

