



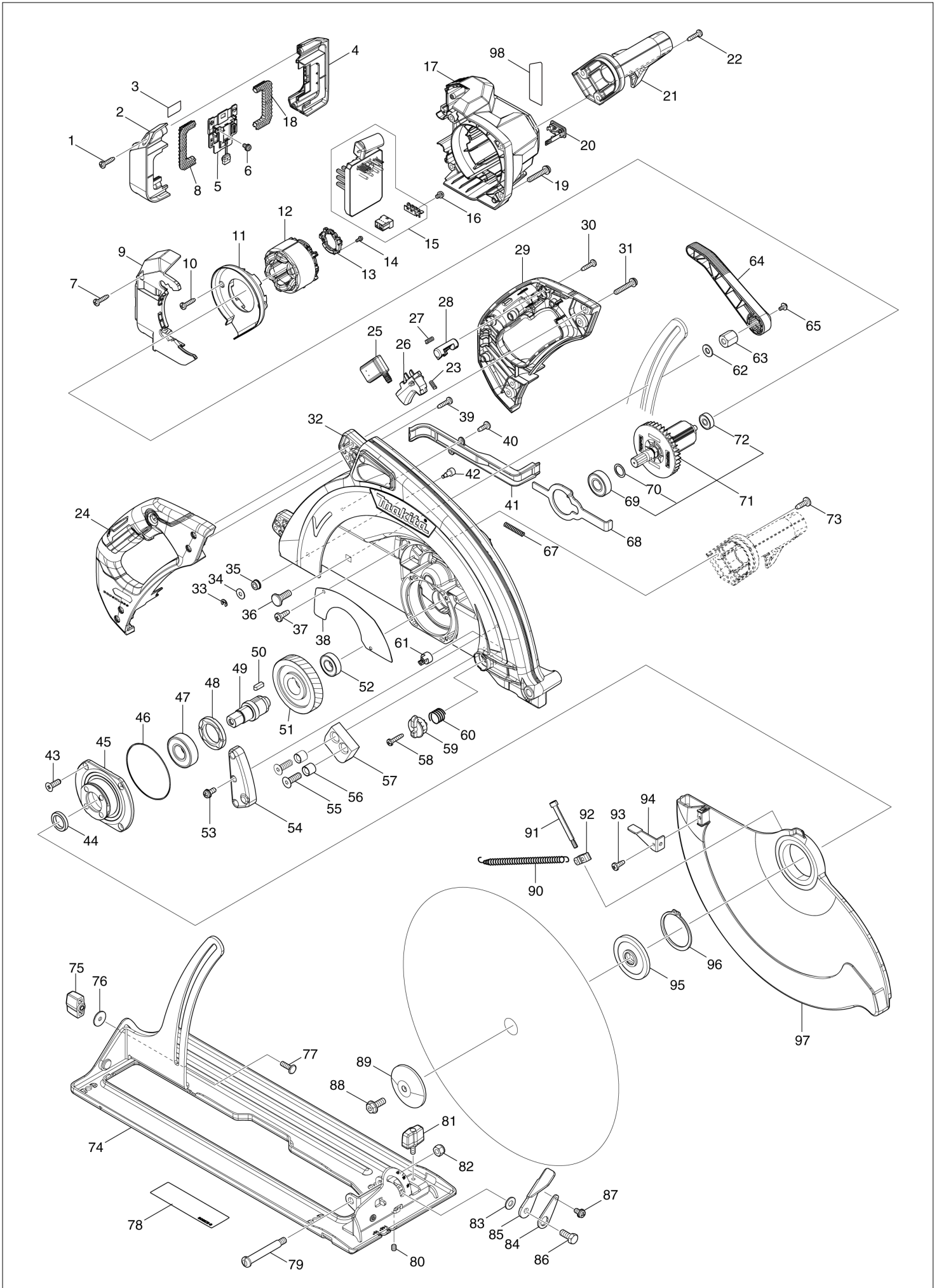
Diagram / Parts List

HS013G

415MM CORDLESS CIRCULAR SAW



(IN) HS013G / 415MM CORDLESS CIRCULAR SAW



IN	INDIA
-----------	--------------

HS013G / 415MM CORDLESS CIRCULAR SAW

Item	Sub	Parts No.	Parts Description	Qty	I/C	E/C No.	Close No.	Remark
001		266326-2	TAPPING SCREW 4X18	2				
002		1830Y4-3	BATTERY HOUSING SET	1				
	C10	263005-3	RUBBER PIN 6	2				
	D10		INC. 4					
003		8147S0-7	HS013G SERIAL NO. LABEL	1				
004		1830Y4-3	BATTERY HOUSING SET	1				
	C10	263005-3	RUBBER PIN 6	2				
	D10		INC. 2					
005		632T08-2	TERMINAL UNIT	1				
006		652031-1	PAN HEAD SCREW M3X6	2				
007		266326-2	TAPPING SCREW 4X18	2				
008		422543-6	CUSHION RUBBER	1				
009		4131E9-8	MOTOR HOUSING COVER	1				
010		266326-2	TAPPING SCREW 4X18	2				
011		4131F2-9	BAFFLE PLATE	1				
012		629C86-9	STATOR	1				
013		632R96-7	SENSOR UNIT	1				
014		652119-7	PAN HEAD SCREW M2X6	3				
015		620R04-0	CONTROLLER	1				
016		652069-6	FLAT HEAD SCREW M3X6	3				
017		4131E8-0	MOTOR HOUSING	1				
018		422543-6	CUSHION RUBBER	1				
019		911253-5	PAN HEAD SCREW M5X30	4				
020		140F99-0	CAP COMPLETE	1				
	C10	213A05-9	O-RING16	1				
021		4131F0-3	FRONT HANDLE	1				
022		266045-0	TAPPING SCREW 4X20	2				
023		231433-0	COMPRESSION SPRING 4	1				
024		1830Y5-1	HANDLE SET	1				
	C10	931202-6	HEX. NUT M5	4				
	D10		INC. 29					
025		651083-9	SWITCH C3XA-1PSPM	1				
026		459829-5	SWITCH LEVER	1				
027		231433-0	COMPRESSION SPRING 4	1				
028		419704-7	LOCK OFF BUTTON	1				
029		1830Y5-1	HANDLE SET	1				
	C10	931202-6	HEX. NUT M5	4				
	D10		INC. 24					
030		266326-2	TAPPING SCREW 4X18	4				
031		911253-5	PAN HEAD SCREW M5X30	4				
032		137229-6	BLADE CASE ASS'Y	1				
	C10	263005-3	RUBBER PIN 6	1				
033		961017-7	STOP RING E-3	1				
034		267099-0	FLAT WASHER 4	1				
035		262104-8	SHOULDER RING 4	1				
036		266249-4	CAP SQUARE NECK BOLT M8X24	1				
037		266026-4	TAPPING SCREW BIND CT 4X12	2				
038		344891-2	COVER PLATE	1				
039		266326-2	TAPPING SCREW 4X18	2				
040		266026-4	TAPPING SCREW BIND CT 4X12	2				
041		417276-6	LEAD COVER	1				
042		266289-2	HEX. SOCKET HEAD BOLT M6	1				
043		265034-2	+ COUNTERSUNK HEAD SCREW M5X1	4				
044		257230-6	RING 20	1				
045		317378-7	BEARING BOX	1				
046		213763-1	O RING 75	1				
047		211329-1	BALL BEARING 6204DDW	1				
048		285824-7	BEARING RETAINER 31-48	1				
049		323938-5	SPINDLE	1				
050		254229-2	KEY 5	1				
051		227B85-5	HELICAL GEAR 61	1				
052		211247-3	BALL BEARING 6002DDW	1				
053		911113-1	PAN HEAD SCREW M4X10 WITH WR	1				
054		417282-1	STOPPER PLATE	1				
055		251973-2	HEX.SOCKET C.S.HEAD BOLT M8X25	2			Y09555	

A:HS013GZ(N)
B:HS013GT101(H)

Interchange
O : Yes
X : No
< : the new part can be substituted for the current.
> : the current part can be substituted for the new.
S : Interchangeable as a set.

IN	INDIA
----	-------

HS013G / 415MM CORDLESS CIRCULAR SAW

Item	Sub	Parts No.	Parts Description	Qty	I/C	E/C No.	Close No.	Remark
055-1		251973-2	HEX.SOCKET C.S.HEAD BOLT M8X25	2	O	Y09555		
056		257720-9	SLEEVE 8	2				
057		421820-3	RUBBER CUSHION	1				
058		266045-0	TAPPING SCREW 4X20	1				
059		417279-0	LOCK LEVER	1				
060		233272-4	COMPRESSION SPRING 16	1				
061		417280-5	STOPPER PIN	1				
062		941201-0	FLAT WASHER 8	1				
063		252352-7	HEX.NUT M8-17	1				
064		4131F1-1	DEPTH LEVER	1				
065		911114-9	PAN HEAD SCREW M4X10	1				
067		233264-3	COMPRESSION SPRING 5	1				
068		344890-4	SHAFT LOCK	1				
069		211228-7	BALL BEARING 6202DDW	1				
070		253147-1	FLAT WASHER 15	1				
071		519883-2	ROTOR ASS'Y	1				
	D10		INC. 69,70,72					
072		210045-2	BALL BEARING 627DDW	1				
073		266027-2	TAPPING SCREW CT5X16	2				
074		163498-3	BASE	1				
075		252624-0	WING NUT M6	1				
076		253010-8	FLAT WASHER 6	1				
077		251919-8	CAP SQUARE NECK BOLT M6X20	1				
078		8081C5-9	INDICATION LABEL	1				
079		251405-9	- SHOULDER PAN HEAD SCREW M8	1			Y09555	
079-1		251405-9	- SHOULDER PAN HEAD SCREW M8	1	O	Y09555		
080		266208-8	H.S.SET SCREW(CUP POINT)M6X8	1				
081		251858-2	DIAL SCREW M6X15	1				
082		252105-4	HEX. LOCK NUT M8-13	1				
083		941201-0	FLAT WASHER 8	1				
084		341415-5	LOCK PLATE	1				
085		344980-3	LEVER PLATE	1				
086		921432-7	HEX. BOLT M8X20	1				
087		911108-4	PAN HEAD SCREW M4X8	1				
088		266283-4	HEX. SOCKET HEX. BOLT M8X20	1				
089		224310-3	OUTER FLANGE 65	1				
090		231826-1	TENSION SPRING 8	1				
091		266290-7	HEX. SOCKET HEAD BOLT M5	1				
092		163431-5	ROLLER COMPLETE	1				
093		266026-4	TAPPING SCREW BIND CT 4X12	1				
094		344966-7	LEVER	1				
095		224264-4	INNER FLANGE 65	1				
096		961252-7	RETAINING RING S-55	1				
097		312H48-1	SAFETY COVER	1				
098		8147R4-2	HS013G NAME PLATE	1				
A01		266036-1	TAPPING SCREW BIND CT 5X20	1				
A02		450316-7	JOINT	1				
A03		4131E7-2	PROTECT STAND	1				
A04		E-24832	TCT SAW EFFI 415X35T	1				
A05		783204-6	HEX. WRENCH 6	1				
A06B		412393-7	BATTERY COVER	1				
A07B		***DC40RA	DC40RA FAST CHARGER	1				
	D10		COMPO-PARTS					
A08B		191L52-5	BATTERY BL4050F SET	1				
F05		199427-0	JOINT SET	1		DX002		
	C10	450316-7	JOINT	1		DX002		
	C20	266036-1	TAPPING SCREW BIND CT 5X20	1		DX002		

A:HS013GZ(N) B:HS013GT101(H)	Interchange O : Yes X : No < : the new part can be substituted for the current. > : the current part can be substituted for the new. S : Interchangeable as a set.
---------------------------------	---