

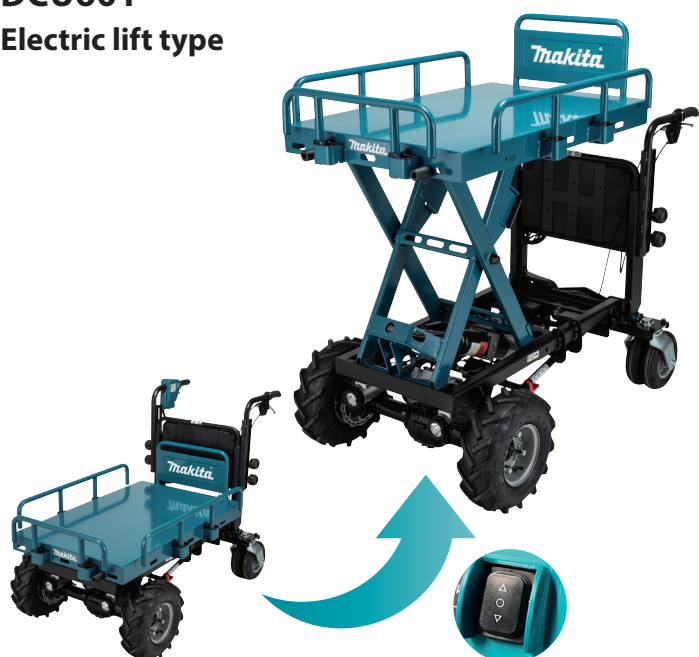


# Battery Powered Wheelbarrow DCU601 / DCU602

Satisfy Professional's Needs



**DCU601**  
Electric lift type



**DCU602**  
Electric dump type



18v + 18v → 36v

**BL** MOTOR **XPT**



## Battery Powered Wheelbarrow series



### DCU603

#### Manual dump + Dump bucket

- Rust-free plastic bucket accepts wet loads.
- Inside bottom and front faces are angled for easy dump operation.



#### Bucket capacity

Heaped capacity

**200 L**

Full liquid capacity

**100 L**

#### Manual dump

designed for increased efficiency in unloading



### DCU604

#### Manual dump + Pipe frame carrier

Ideal for container boxes or bagged materials



#### Manual dump

High unloading efficiency



#### Telescopic loading platform



### DCU605

#### Flat bucket

- Rust-free plastic bucket accepts wet loads.
- Optimal for operations not requiring dump function such as feeding in stables



#### Bucket capacity

Heaped capacity

**295 L**

Full liquid capacity

**250 L**

There is no screw on the inside of the bucket, allowing for smooth unloading operation using tool such as a clay-spade.



Capped nozzle for draining liquid is convenient when carrying liquid or cleaning the bucket.



## Accessories

### Tire 330 (single) set

Part No. 1911K4-7

For lawn and pavement



#### Front tire

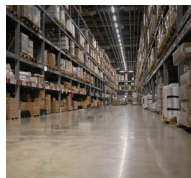


- Tubed tire
- Color: Black
- Includes one tire.

### Gray tire 330 (single) set

Part No. 1911K5-5

For use in industrial sites, such as factory, where black tire marks on the floor are undesirable.



#### Front tire

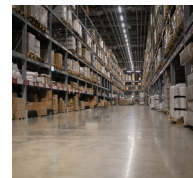


- Tubed tire
- Color: Gray
- Includes one tire.

### Gray tire 210 (single) set

Part No. 1911K6-3

For use in industrial sites, such as factory, where black tire marks on the floor are undesirable.



#### Rear tire



- Tubed tire
- Color: Gray
- Includes one tire.

## Charging Time

	Fast Charging	
	DC18RC	DC18RD
<b>BL1815N</b> 1.5Ah	<b>15 min</b>	<b>30 min</b>
<b>BL1820B</b> 2.0Ah	<b>24 min</b>	<b>45 min</b>
<b>BL1830B</b> 3.0Ah	<b>22 min</b>	<b>60 min</b>
<b>BL1840B</b> 4.0Ah	<b>36 min</b>	<b>90 min</b>
<b>BL1850B</b> 5.0Ah	<b>45 min</b>	<b>110 min</b>
<b>BL1860B</b> 6.0Ah	<b>55 min</b>	<b>130 min</b>

## Battery Powered Wheelbarrow

### DCU601 / DCU602

Variable Speed	Traveling speed	Forward: 5.0, 3.5, 1.5 km/h Reverse: 1.0 km/h
Brake	Potential travel distance	7.2 km (with four BL1860B batteries, on flat ground, with lights off, loaded with 300 kg, at 5.0 km/h)
Reversing	Continuous run time on full battery charge	100 min (with four BL1860B batteries, on flat ground, with lights off, loaded with 300 kg, at 5.0 km/h)
Electronic 3-Speed	Max load capacity	Flat ground (0 - 3°): 300 kg (661 lbs), Slope (3 - 12°): 180 kg (397 lbs)
Constant Speed	Max climbing capacity	12°
Soft Start	Tire size	Front / Rear: 330 / 210 mm (13 / 8-1/4")
Built-in Job Light	Handle height adjustment	740 / 780 / 820 / 860 / 900 / 940 / 980 mm (29-1/8 / 30-3/4 / 32-1/4 / 33-3/4 / 35-1/2 / 37 / 38-1/2")
	Dimensions (L x W x H)	DCU601: When carrier is installed, during operation: 1,400 x 730 x 820 - 1,260 mm (55 x 28-3/4 x 32-1/4 - 49-1/2") DCU602: When carrier is installed, during operation: 1,480 x 730 x 820 - 1,260 mm (58-1/4 x 28-3/4 x 32-1/4 - 49-1/2")
	Net weight	DCU601: 145 kg (320 lbs.) DCU602: 147 kg (324 lbs.)

The weight may differ depending on the attachment(s), including the battery cartridge. The lightest and heaviest combination, according to EPTA-Procedure 01/2014, are shown in the table.  
Items of standard equipment and specifications may vary by country or area.



## Makita Power Tools India Pvt. Ltd.

Unit II Sy. Nos. 93/3 & 93/4, Korallur Village, Kasaba Hobli,  
Hoskote Taluk, Bengaluru - 560067  
Email: info@makita.in Website: www.makita.in