



# Battery Powered Wheelbarrow DCU601 / DCU602



**DCU601**  
Electric lift type

**DCU602**  
Electric dump ty

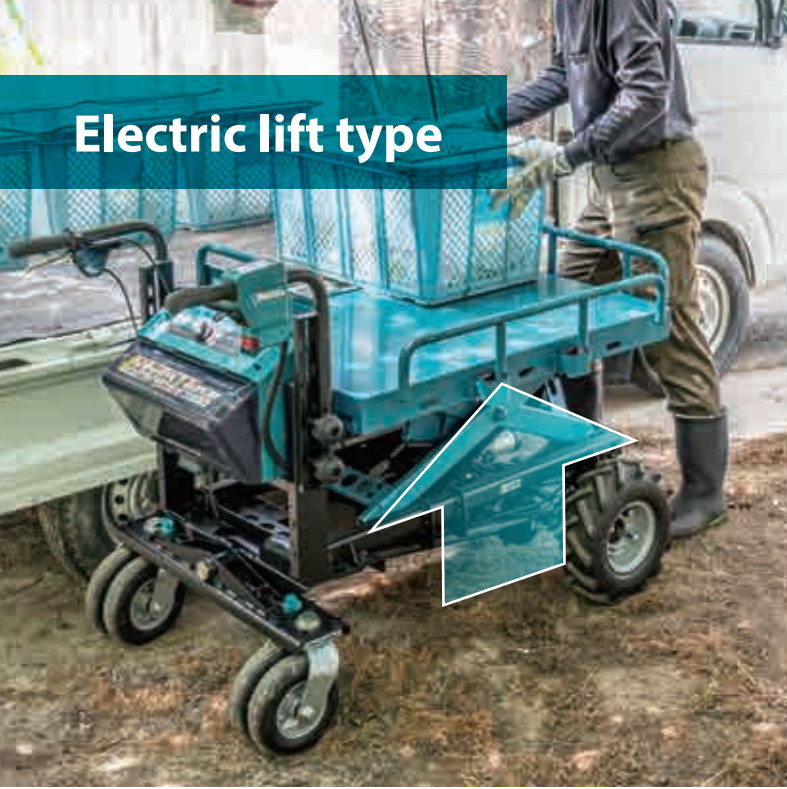


18v + 18v → 36v

**BL** MOTOR **XPT**



## Electric lift type



## Electric dump type



**Max load capacity**  
on flat ground (0 - 3 degrees)

**300 kg**

on slope (3 - 12 degrees)

**180 kg**

**Traveling distance** **7.2 km**

with BL1860B x 4  
On flat ground, with lights off, loaded with 300kg, at 5.0km/h

### Traveling speed change

- Selection of 3 Forward speeds and F/R rotation by push button
- Stepless variable speed control by switch trigger in each range

Forward	Reverse
3 speeds (1.5/3.5/5.0 km/h)	1 speed (1.0 km/h)

**Max climbing ability**

**12°**



### Hand brake lever

- Brake for speed reduction while driving the wheelbarrow
- Can be used as a parking brake by locking this lever.



### Electric brake

- You can minimize the chance of load collapse by releasing the switch trigger to activate soft electric brake.

### Electromagnetic brake

- Powerful electromagnetic brake is activated to keep the motor braked when the driving speed decreases almost to 0km.

**High power**  
**Brushless motor**

**BL**  
**MOTOR**



# Electric lift type

DCU601



## Electric lift type



- The electric lift is limited to use on a flat ground, therefore, the machine is equipped with a level gauge to check the leveling of the machine.



## Compatible with various sizes of loads

The front, left, and right guards are designed to be easily lowered below the flat frame by lifting and sliding them, allowing for easy loading and unloading while dragging loads without lifting up them.



**Loading platform size: 965 x 645 mm (L x W)**



# Electric dump type

DCU602



## Electric dump

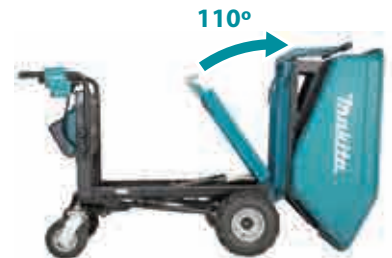
- Reduces workload when dumping soil and other materials on the ground that are too heavy to lift manually.



- The electric dump is limited to use on a flat ground, therefore, the machine is equipped with a level gauge to check the leveling of the machine.



[Tilts electrically up to 75°]  
(Tilts to 75° in approx. 30 seconds.)



[Can be manually tilted for more than 75°]

Bucket capacity	
Heaped capacity	Full liquid capacity
<b>200 L</b>	<b>100 L</b>



## Tilt mechanism of rear wheels

Rear wheel axle is designed to tilt to enable Front wheels (driving wheels) to stably touch the ground for reliable driving even on bumpy road surfaces.



## Headlights

- turn off automatically with no operation for 10 minutes.

18v + 18v → 36v



Two or four batteries can be installed for a 2-series / 2-parallel connection for a secure amount of work.



## Tool-less handle height adjustment

Handle height can be adjusted according to user's height without tool simply by turning 2 knob screws.



## XPT

### IPX4-compatible

High water-resistance allows to operate the machine even if it is wet with water.



Swivel lock on rear wheels

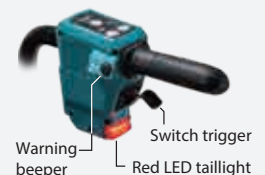
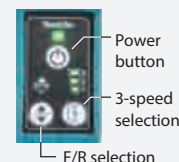
Twin tires (rear wheels)



## Neutral mode

shuts off the power transmission between the motor shaft and the axle in case of no battery installation, low battery capacity or broken motor, enabling to drive the wheelbarrow manually.

\* This function is for emergencies. Refer to the instruction manual for details.



## Battery Powered Wheelbarrow series



### DCU603

Manual dump + Dump bucket

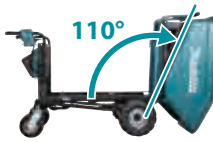
- Rust-free plastic bucket accepts wet loads.
- Inside bottom and front faces are angled for easy dump operation.



Bucket capacity
Heaped capacity <b>200 L</b>
Full liquid capacity <b>100 L</b>

#### Manual dump

designed for increased efficiency in unloading



### DCU604

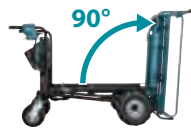
Manual dump + Pipe frame carrier

Ideal for container boxes or bagged materials

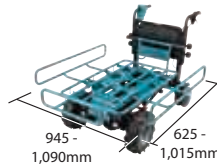


#### Manual dump

High unloading efficiency



#### Telescopic loading platform



### DCU605

Flat bucket

- Rust-free plastic bucket accepts wet loads.
- Optimal for operations not requiring dump function such as feeding in stables



Bucket capacity
Heaped capacity <b>295 L</b>
Full liquid capacity <b>250 L</b>

There is no screw on the inside of the bucket, allowing for smooth unloading operation using tool such as a clay-spade.



Capped nozzle for draining liquid is convenient when carrying liquid or cleaning the bucket.

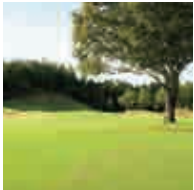


## Accessories

### Tire 330 (single) set

Part No. 1911K4-7

For lawn and pavement



Front tire



- Tubed tire
- Color: Black
- Includes one tire.

### Gray tire 330 (single) set

Part No. 1911K5-5

For use in industrial sites, such as factory, where black tire marks on the floor are undesirable.



Front tire

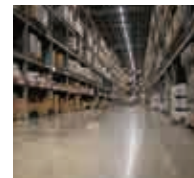


- Tubed tire
- Color: Gray
- Includes one tire.

### Gray tire 210 (single) set

Part No. 1911K6-3

For use in industrial sites, such as factory, where black tire marks on the floor are undesirable.



Rear tire



- Tubed tire
- Color: Gray
- Includes one tire.

## Charging Time

	Fast Charging		
	DC18RC	DC18RD	DC18SD
<b>BL1815N</b> 1.5Ah	<b>15 min</b>	<b>30 min</b>	
<b>BL1820B</b> 2.0Ah	<b>24 min</b>	<b>45 min</b>	
<b>BL1830B</b> 3.0Ah	<b>22 min</b>	<b>60 min</b>	
<b>BL1840B</b> 4.0Ah	<b>36 min</b>	<b>90 min</b>	
<b>BL1850B</b> 5.0Ah	<b>45 min</b>	<b>110 min</b>	
<b>BL1860B</b> 6.0Ah	<b>55 min</b>	<b>130 min</b>	

## Battery Powered Wheelbarrow

### DCU601 / DCU602

Variable Speed	Traveling speed	Forward: 5.0, 3.5, 1.5 km/h Reverse: 1.0 km/h
Brake	Potential travel distance	7.2 km (with four BL1860B batteries, on flat ground, with lights off, loaded with 300 kg, at 5.0 km/h)
Reversing	Continuous run time on full battery charge	100 min (with four BL1860B batteries, on flat ground, with lights off, loaded with 300 kg, at 5.0 km/h)
Electronic 3-Speed	Max load capacity	Flat ground (0 - 3°): 300 kg (661 lbs), Slope (3 - 12°): 180 kg (397 lbs)
Constant Speed	Max climbing capacity	12°
Soft Start	Tire size	Front / Rear: 330 / 210 mm (13 / 8-1/4")
Built-in Job Light	Handle height adjustment	740 / 780 / 820 / 860 / 900 / 940 / 980 mm (29-1/8 / 30-3/4 / 32-1/4 / 33-3/4 / 35-1/2 / 37 / 38-1/2")
	Dimensions (L x W x H)	DCU601: When carrier is installed, during operation: 1,400 x 730 x 820 - 1,260 mm (55 x 28-3/4 x 32-1/4 - 49-1/2") DCU602: When carrier is installed, during operation: 1,480 x 730 x 820 - 1,260 mm (58-1/4 x 28-3/4 x 32-1/4 - 49-1/2")
	Net weight	DCU601: 145 kg (320 lbs.) DCU602: 147 kg (324 lbs.)

The weight may differ depending on the attachment(s), including the battery cartridge. The lightest and heaviest combination, according to EPTA-Procedure 01/2014, are shown in the table. Items of standard equipment and specifications may vary by country or area.

# Makita Corporation

3-11-8 Sumiyoshi-cho, Anjo, Aichi, 446-8502 Japan

PRINTED IN JAPAN 202311