



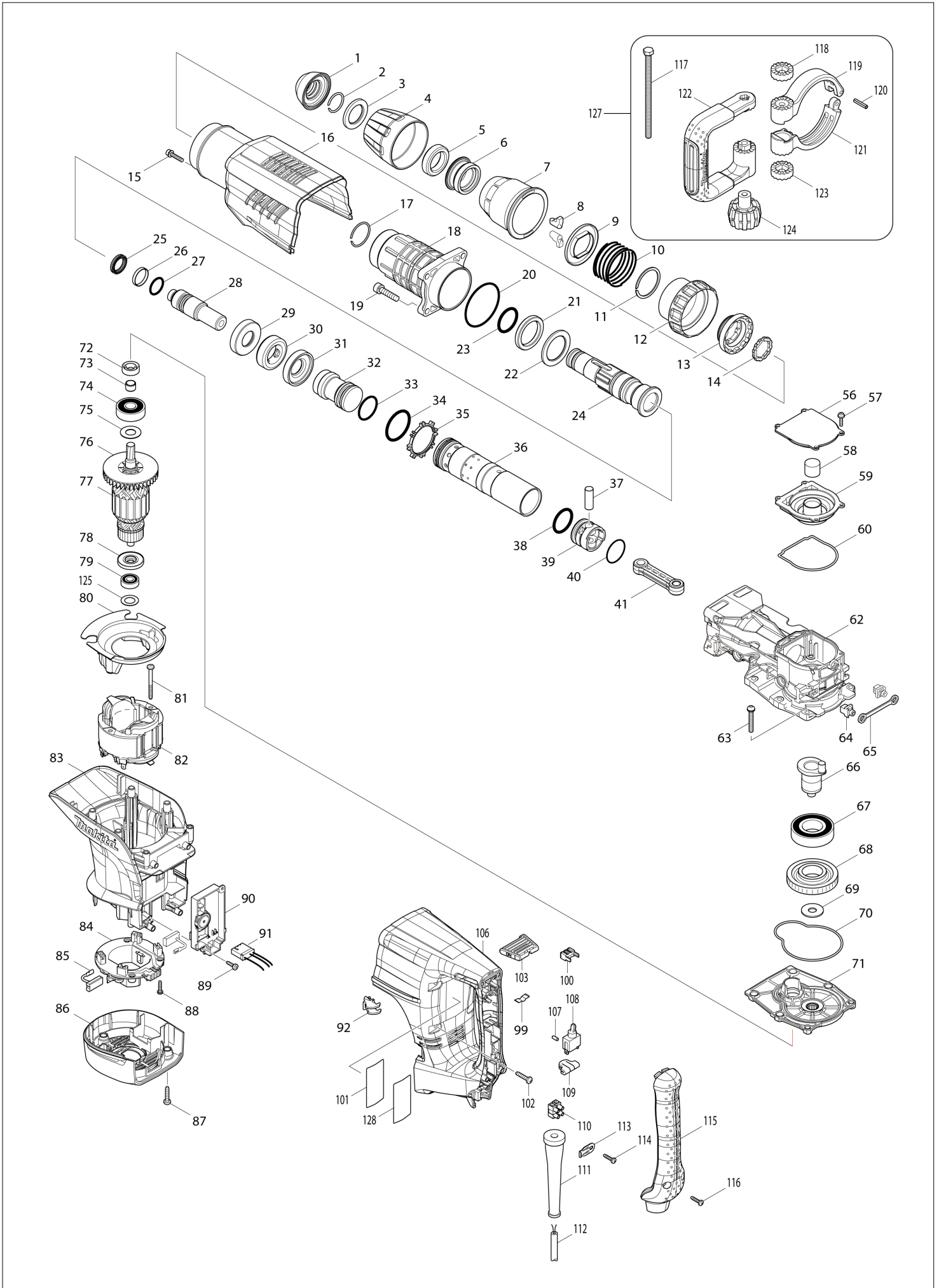
Diagram / Parts List

HM1205C

DEMOLITION HAMMER



(IN) HM1205C / DEMOLITION HAMMER



IN	INDIA
-----------	--------------

HM1205C / DEMOLITION HAMMER

Item	Sub	Parts No.	Parts Description	Qty	I/C	E/C No.	Close No.	Remark
001		424165-8	TOOL HOLDER CAP	1				
002		233973-4	RING SPRING 26	1				
003		267386-7	FLAT WASHER 30	1				
004		450894-7	CHUCK COVER	1				
005		262147-0	RUBBER RING 30	1				
006		324987-5	CHUCK RING	1				
007		450895-5	RELEASE COVER	1				
008		310279-8	TOOL RETAINER	2				
009		346015-6	SPRING GUIDE	1				
010		234086-4	COMPRESSION SPRING 56	1				
011		961232-3	RETAINING RING WR-45	1				
012		450893-9	CHANGE RING COVER	1				
013		324969-7	CHANGE RING	1				
014		324988-3	LOCK RING	1				
015		922243-3	HEX. SOCKET HEAD BOLT M5X25	1				
016		450903-2	HOUSING COVER	1				
017		233970-0	RING SPRING 35	1				
018		158858-2	BARREL COMPLETE	1				
019		922456-6	HEX. SOCKET HEAD BOLT M8X35	4				
020		213720-9	O RING 67	1				
021		262148-8	RUBBER RING 39	1				
022		267387-5	FLAT WASHER 39	1				
023		213079-4	O-RING 35.5	1				
024		324985-9	TOOL HOLDER	1				
025		213980-3	X-RING 21	1				
026		213431-6	FLUORIDE RING 28	1				
027		213394-6	O RING 23	1				
028		324990-6	IMPACT BOLT	1				
029		324993-0	SHOULDER SLEEVE	1				
030		262149-6	RUBBER RING 24	1				
031		324993-0	SHOULDER SLEEVE	1				
032		326355-8	STRIKER	1				
033		213499-2	O-RING 31.5	1				
034		213581-7	O-RING 44	1				
035		450889-0	ONE WAY VALVE GUIDE	1				
036		331925-0	CYLINDER 40	1				
037		268121-6	PIN 12	1				
038		213499-2	O-RING 31.5	1				
039		450961-8	PISTON	1				
040		213149-9	O RING 35	1				
041		450890-5	CONNECTING ROD	1				
056		450899-7	CRANK CAP COVER	1				
057		911133-5	PAN HEAD SCREW M4X18	4				
058		443127-7	FILTER	1				
059		450898-9	CRANK CAP	1				
060		424166-6	SEAL RING	1				
062		318364-1	CRANK HOUSING	1				
063		266482-8	H.S.BUTTON HEAD SCREW M6X40	6				
064		419008-7	FIX GUIDE	2				
065		423366-5	CUSHION PLATE	1				
066		324994-8	CRANK SHAFT	1				
067		211424-7	BALL BEARING 6206LLU	1				
068		226691-1	HELICAL GEAR 57	1				
069		267398-0	FLAT WASHER 12	1				
070		424167-4	SEAL RING	1				
071		158859-0	GEAR HOUSING COMPLETE	1				
072		213231-4	OIL SEAL 15	1				
073		331596-3	SLEEVE 12	1				
074		211249-9	BALL BEARING 6302LLU	1				
075		267397-2	FLAT WASHER 15	1				
076		240003-4	FAN 80	1				
077A		517818-7	ARMATURE ASS'Y 220-240V	1				220-240V
077L		517815-3	ARMATURE ASS'Y 100-115V	1				110V
	D10		INC. 73-76,78,79					
078		681642-5	INSULATION WASHER	1				

A:HM1205C(H)
L:HM1205C(L)

Interchange
O : Yes
X : No
< : the new part can be substituted for the current.
> : the current part can be substituted for the new.
S : Interchangeable as a set.

HM1205C / DEMOLITION HAMMER

Item	Sub	Parts No.	Parts Description	Qty	I/C	E/C No.	Close No.	Remark
079		211289-7	BALL BEARING 6000DDW	1				
080		450900-8	BAFFLE PLATE	1				
081		266095-5	TAPPING SCREW 5X55	2				
082A		636303-2	FIELD 220-240V	1				220-240V
082L		636301-6	FIELD 115V	1				110V
083		450904-0	MOTOR HOUSING	1				
084A		638447-4	BRUSH HOLDER UNIT	1			A4072	
084-1A		632D00-2	BRUSH HOLDER UNIT	1	<	A4072		
084-1L		632D00-2	BRUSH HOLDER UNIT	1				
085		195844-2	CARBON BRUSH CB-175	1				
086		450901-6	REAR COVER	1				
087		266041-8	TAPPING SCREW 5X25	3				
088		265995-6	TAPPING SCREW 4X18	4				
089A		266192-7	TAPPING SCREW 4X14	2			A2782	
089-1A		266300-0	TAPPING SCREW 4X18	2	<	A2782	C5745	
089-1L		266300-0	TAPPING SCREW 4X18	2			C5745	
089-2		265678-8	TAPPING SCREW 4X18	2	O	C5745		
090A		631869-7	CONTROLLER	1				220-240V
090L		631868-9	CONTROLLER	1				110V
091		638650-7	LEAD UNIT	1				
092		419010-0	LENS	1				
099		232209-8	LEAF SPRING	1				
100		450891-3	LEVER STOPPER	1				
101		814S61-6	HM1205C NAME PLATE	1				
102		266041-8	TAPPING SCREW 5X25	6				
103		450897-1	SLIDE LEVER	1				
106		450907-4	HANDLE	1				
107		263027-3	RUBBER PIN 4	1				
108		651423-1	SWITCH	1			DB412	
108-1		651423-1	SWITCH	1	O	DB412		
109		423379-6	SPONGE SHEET	1				
110		654531-7	TERMINAL BLOCK 2P	1				
111		682560-0	CORD GUARD 10	1				
112		695137-2	POWER SUPPLY CORD 1.5-2-5.0	1				
113		687169-3	STRAIN RELIEF	1				
114		265995-6	TAPPING SCREW 4X18	1				
115		450908-2	HANDLE COVER	1				
116		265995-6	TAPPING SCREW 4X18	2				
117		265439-6	HEX. BOLT M8X150	1				
118		417002-3	SIDE HANDLE CAM	1				
119		318505-9	SIDE HANDLE BASE 82A	1				
120		951166-8	SPRING PIN 5-24	1				
121		318506-7	SIDE HANDLE BASE 82B	1				
122		417003-1	SIDE HANDLE	1				
123		417002-3	SIDE HANDLE CAM	1				
124		252640-2	WING NUT M8	1				
125		267164-5	FLAT WASHER 15	1				
127		135269-8	SIDE HANDLE 82 ASS'Y	1				
	D10		INC. 117-124					
128		801Y75-0	CLEAR LABEL	1				
A02		194683-7	GREASE VESSEL SET	1				
A03		443122-7	CLOTH	1				
A04A		824876-9	PLASTIC CARRYING CASE	1			A9011	
	C10	162271-8	LATCH	2			A9011	
	C20	325637-5	SHAFT	1			A9011	
	C30	450990-1	HANDLE	1			A9011	
A04-1A		143519-7	PLASTIC CASE COMPLETE	1	<	A9011		
	C10	162271-8	LATCH	2		A9011		
	C20	325637-5	SHAFT	1		A9011		
	C30	450990-1	HANDLE	1		A9011		
	C40	835200-1	SPONGE 40-40	3		A9011		
A04-1L		143519-7	PLASTIC CASE COMPLETE	1				
	C10	162271-8	LATCH	2				
	C20	325637-5	SHAFT	1				
	C30	450990-1	HANDLE	1				

A:HM1205C(H)
L:HM1205C(L)

Interchange
O : Yes
X : No
< : the new part can be substituted for the current.
> : the current part can be substituted for the new.
S : Interchangeable as a set.

