



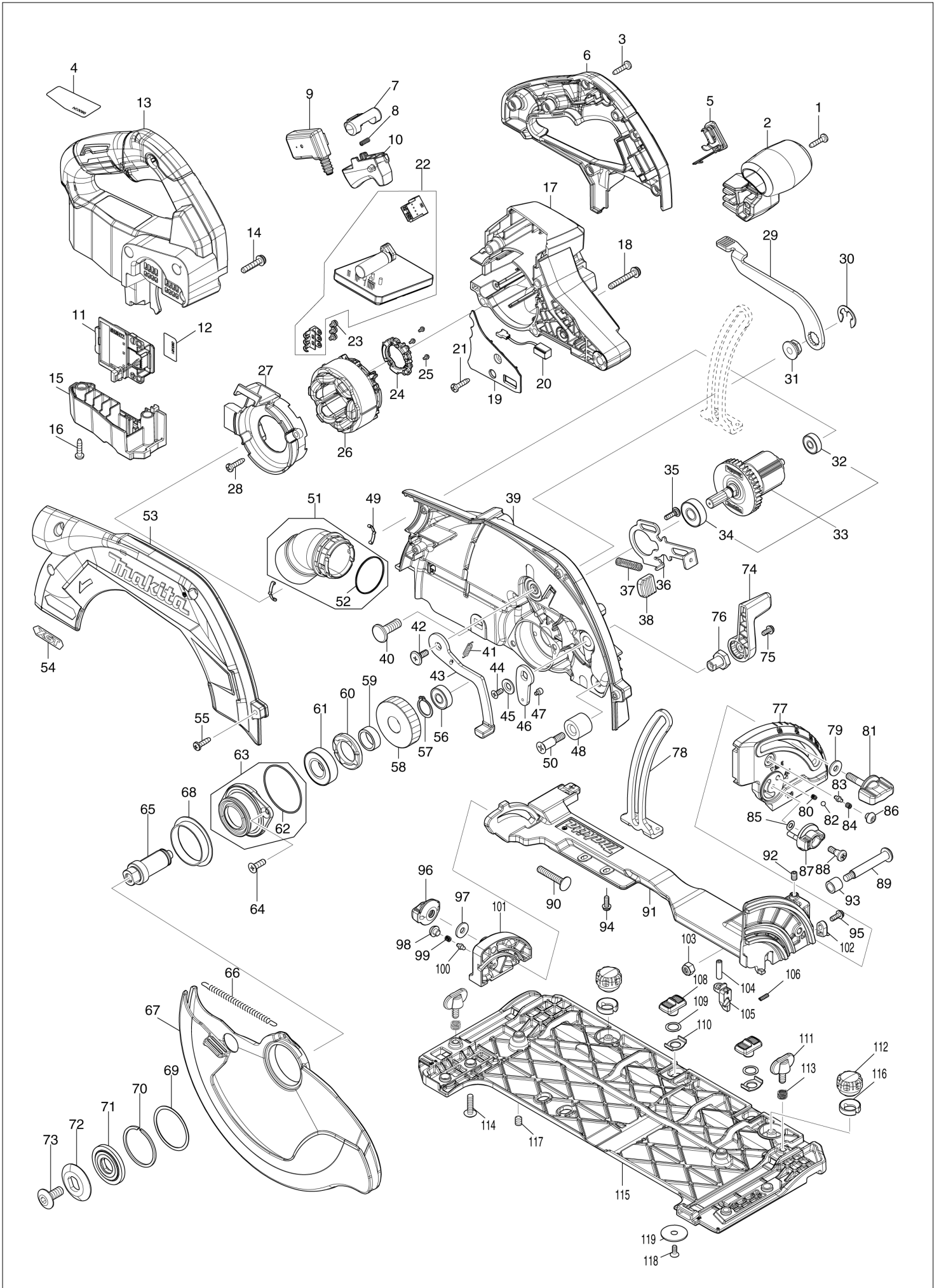
Diagram / Parts List

HS009G

235MM CORDLESS CIRCULAR SAW



(IN) HS009G / 235MM CORDLESS CIRCULAR SAW



IN	INDIA
----	-------

HS009G / 235MM CORDLESS CIRCULAR SAW

Item	Sub	Parts No.	Parts Description	Qty	I/C	E/C No.	Close No.	Remark
001		266326-2	TAPPING SCREW 4X18	1				
002		413C21-5	FRONT GRIP	1				
003		266326-2	TAPPING SCREW 4X18	6				
004		8114P0-9	HS009G NAME PLATE	1				
005		140F99-0	CAP COMPLETE	1				
	C10	213A05-9	O-RING16	1				
006		183U47-6	HANDLE SET	1				
	C10	263005-3	RUBBER PIN 6	1				
	D10		INC. 13					
007		419704-7	LOCK OFF BUTTON	1				
008		231433-0	COMPRESSION SPRING 4	1				
009		650008-0	SWITCH C3XB-1LPSPM	1				
010		413C24-9	SWITCH LEVER	1				
011		632P65-6	TERMINAL UNIT	1				
012		8114P6-7	HS009G SERIAL NO. LABEL	1				
013		183U47-6	HANDLE SET	1				
	C10	263005-3	RUBBER PIN 6	1				
	D10		INC. 6					
014		911243-8	PAN HEAD SCREW M5X25	3				
015		141G16-9	TERMINAL HOUSING COMPLETE	1				
	C10	263005-3	RUBBER PIN 6	1				
016		266326-2	TAPPING SCREW 4X18	2				
017		413C17-6	MOTOR HOUSING	1				
018		911258-5	PAN HEAD SCREW M5X35	4				
019		413C23-1	LIGHT COVER	1				
020		620936-3	LED CIRCUIT	1				
021		266326-2	TAPPING SCREW 4X18	1				
022		620H80-4	CONTROLLER	1				
023		652069-6	FLAT HEAD SCREW M3X6	3				
024		632R96-7	SENSOR UNIT	1				
025		652093-9	PAN HEAD SCREW M2X5	3				
026		629A40-1	STATOR	1				
027		413C22-3	BAFFLE PLATE	1				
028		266326-2	TAPPING SCREW 4X18	2				
029		271453-2	LEVER 132	1				
030		257953-6	BOW STOP RING E-12	1				
031		252262-8	COLLERED HEX. NUT M8	1				
032		210022-4	BALL BEARING 626DDW	1				
033		519721-8	ROTOR ASS'Y	1				
	D10		INC. 32,34					
034		210059-1	BALL BEARING 6000DDW	1				
035		251529-1	+ PAN HEAD SCREW M4X14	1				
036		347676-5	SHAFT LOCK	1				
037		233084-5	COMPRESSION SPRING 6	1				
038		286039-9	CAP	1				
039		141G17-7	BLADE CASE COMPLETE	1				
	C10	213434-0	O RING 26	1				
	C20	263005-3	RUBBER PIN 6	1				
	C30	8004T1-0	SCALE LABEL	1				
040		266396-1	FLATHEAD SQUARENECKBOLT M8X24	1				
041		232563-0	TENSION SPRING 4	1				
042		265A60-7	+ PAN HEAD SCREW M5X14	1				
043		162686-9	OPEN LEVER	1				
044		265135-6	+ COUNTERSUNK HEAD SCREW M4X1	1				
045		347577-7	WASHER 6	1				
046		347576-9	OPEN PLATE	1				
047		265A82-7	HEX. SOCKET HEAD SCREW M3X4	1				
048		262185-2	RUBBER SLEEVE8	1				
049		232674-1	LEAF SPRING	2				
050		251572-0	+ COUNTERSUNK HEAD SCREW M6X3	1				
051		136173-4	DUST NOZZLE ASS'Y	1				
	D10		INC. 52					
052		213444-7	O RING 30	1				
053		312C12-2	BLADE CASE COVER	1				
054		8032A7-2	XGT LOGO LABEL	1				

B:HS009GT201(H)

Interchange
O : Yes
X : No
< : the new part can be substituted for the current.
> : the current part can be substituted for the new.
S : Interchangeable as a set.

HS009G / 235MM CORDLESS CIRCULAR SAW

Item	Sub	Parts No.	Parts Description	Qty	I/C	E/C No.	Close No.	Remark
055		266034-5	TAPPING SCREW CT 4X16	4				
056		210029-0	BALL BEARING 608ZZ	1				
057		961057-5	RETAINING RING S-17	1				
058		226934-1	HELICAL GEAR 46	1				
059		257451-0	RING 17	1				
060		285809-3	BEARING RETAINER 23-36	1				
061		210301-0	BALL BEARING 6003DDW	1				
062		213623-7	O RING 46	1				
063		136192-0	BEARING BOX ASS'Y	1				
	D10		INC. 62					
064		265034-2	+ COUNTERSUNK HEAD SCREW M5X1	2				
065		327192-3	SPINDLE	1				
066		232562-2	TENSION SPRING 6	1				
067		312C14-8	SAFETY COVER	1				
068		459830-0	SPACER	1				
069		267337-0	FLAT WASHER 40	1				
070		257452-8	RETAINING RING (EXT) WR-40	1				
071		224609-6	INNER FLANGE 38	1				
072		224600-4	OUTER FLANGE 38	1				
073		265A59-2	HEX.SOCKET HEAD BOLT M8	1				
074		271451-6	LEVER 55	1				
075		911113-1	PAN HEAD SCREW M4X10 WITH WR	1				
076		252275-9	HEX. NUT M4-16	1				
077		312C17-2	FRONT ANGULAR PLATE	1				
078		347574-3	DEPTH GUIDE	1				
079		253111-2	FLAT WASHER 6	1				
080		233314-4	COMPRESSION SPRING 4	1				
081		265776-8	THUMB SCREW M6X26	1				
082		216008-6	STEEL BALL 4	1				
083		263041-9	SHOULDER PIN 3-5	1				
084		231234-6	COMPRESSION SPRING 3.5	1				
085		253811-4	FLAT WASHER 5	1				
086		266559-9	H.S.BUTTON HEAD BOLT M6X4	1				
087		450704-8	DIAL 27	1				
088		251370-2	+ PAN HEAD SCREW M5	1				
089		251528-3	+ PAN HEAD SCREW M6	1				
090		266332-7	R.H SQUARE NECK BOLT M6X35	1				
091		141G18-5	FRAME COMPLETE	1				
092		266229-0	H.S.SET SCREW(CUP POINT)M5X8	1				
093		257580-9	SLEEVE 8	1				
094		265A84-3	PAN HEAD SCREW M4X12 WITH WR	2				
095		911118-1	PAN HEAD SCREW M4X12	1				
096		252270-9	THUMB NUT M6	1				
097		253111-2	FLAT WASHER 6	1				
098		266559-9	H.S.BUTTON HEAD BOLT M6X4	1				
099		231234-6	COMPRESSION SPRING 3.5	1				
100		263041-9	SHOULDER PIN 3-5	1				
101		312C18-0	REAR ANGULAR PLATE	1				
102		419632-6	POSITION PLATE	1				
103		252014-7	HEX. LOCK NUT M6-10	1				
104		265A83-5	H.S.SET SCREW(FLAT POINT)M5X20	1				
105		412210-1	SLIDER	1				
106		233025-1	COMPRESSION SPRING 2	1				
108		458092-7	SLIDE LEVER	2				
109		253932-2	WAVE WASHER 10	2				
110		345977-5	PLATE	2				
111		265701-9	THUMB SCREW M6X14	2				
112		265775-0	THUMB SCREW M4X3	2				
113		233376-2	COMPRESSION SPRING 8	2				
114		265181-9	+TRUSS HEAD SCREW M5X20	4				
115		312C15-6	BASE	1				
116		419627-9	HOLDER	2				
117		266225-8	H.S.SET SCREW(FLAT POINT)M6X8	2				
118		912112-6	COUNTERSUNK HEAD SCREW M4X10	2				
119		345748-0	LOCK WASHER	2				

B:HS009GT201(H)

Interchange
 O : Yes
 X : No
 < : the new part can be substituted for the current.
 > : the current part can be substituted for the new.
 S : Interchangeable as a set.

