



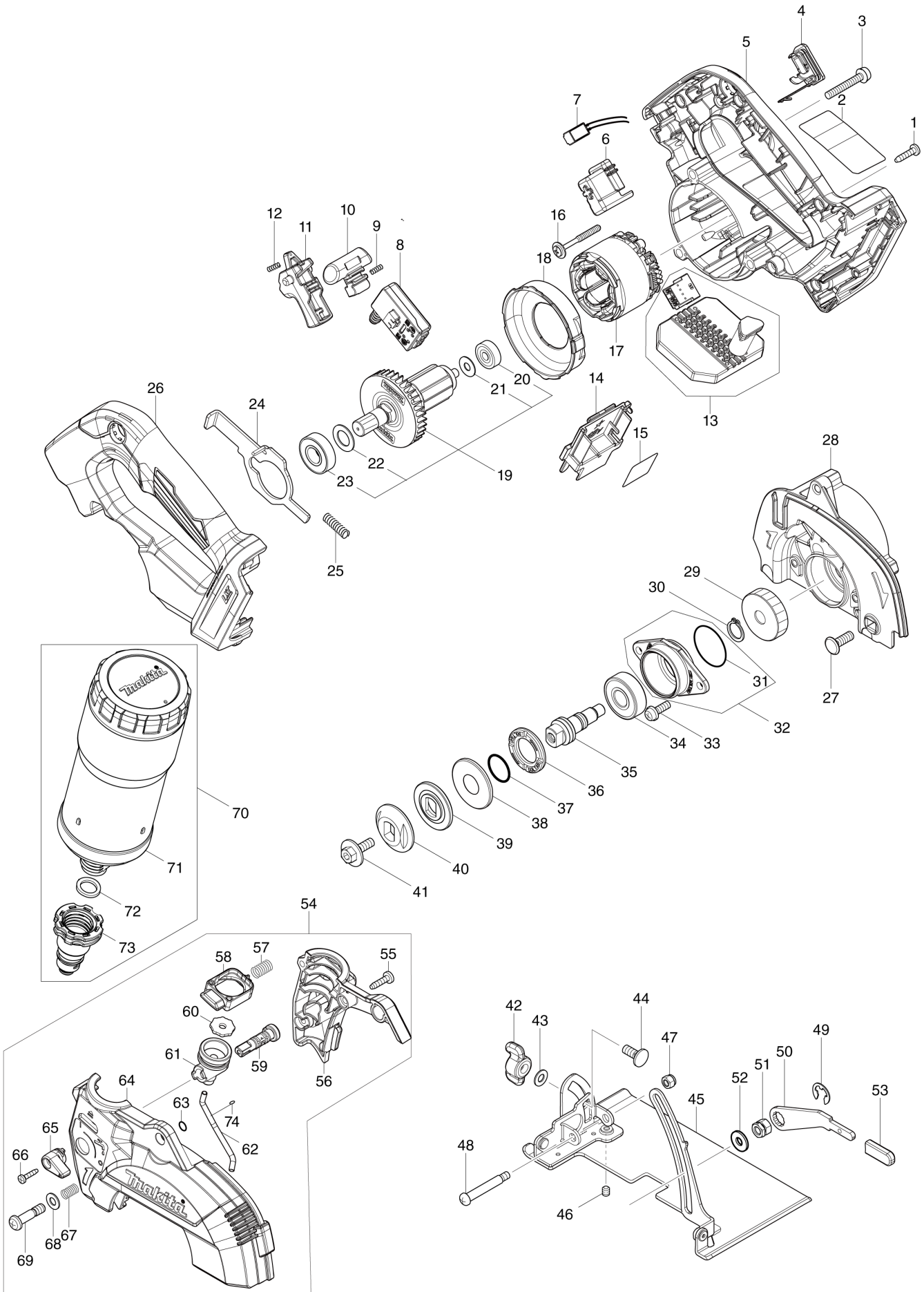
Diagram / Parts List

DCC501

125MM CORDLESS CUTTER



(IN) DCC501 / 125MM CORDLESS CUTTER



| | |
|-----------|--------------|
| IN | INDIA |
|-----------|--------------|

DCC501 / 125MM CORDLESS CUTTER

| Item | Sub | Parts No. | Parts Description | Qty | I/C | E/C No. | Close No. | Remark |
|------|-----|-----------|--------------------------------|-----|-----|---------|-----------|--------|
| 001 | | 266326-2 | TAPPING SCREW 4X18 | 6 | | | | |
| 002 | | 811A32-6 | DCC501 NAME PLATE | 1 | | | | |
| 003 | | 911258-5 | PAN HEAD SCREW M5X35 | 3 | | | | |
| 004 | | 140F99-0 | CAP COMPLETE | 1 | | | | |
| | C11 | 213A05-9 | O-RING16 | 1 | | | | |
| | C20 | 818H07-8 | CAP LABEL | 1 | | | | |
| 005 | | 140Y20-3 | MOTOR HOUSING COMPLETE | 1 | | | | |
| | C10 | 263005-3 | RUBBER PIN 6 | 3 | | | | |
| 006 | | 459256-6 | HOLDER | 1 | | | | |
| 007 | | 620936-3 | LED CIRCUIT | 1 | | | | |
| 008 | | 651083-9 | SWITCH C3XA-1PSPM | 1 | | | | |
| 009 | | 231433-0 | COMPRESSION SPRING 4 | 1 | | | | |
| 010 | | 459264-7 | LOCK OFF BUTTON | 1 | | | | |
| 011 | | 458594-3 | SWITCH LEVER | 1 | | | | |
| 012 | | 231433-0 | COMPRESSION SPRING 4 | 1 | | | | |
| 013 | | 620E44-0 | CONTROLLER | 1 | | | | |
| 014 | | 643874-2 | TERMINAL | 1 | | | | |
| 015 | | 811A34-2 | DCC501 SERIAL NO. LABEL | 1 | | | | |
| 016 | | 265679-6 | TAPPING SCREW 4X40 | 2 | | | | |
| 017 | | 629A39-6 | STATOR | 1 | | | | |
| 018 | | 413291-8 | BAFFLE PLATE | 1 | | | | |
| 019 | | 519665-2 | ROTOR ASS'Y | 1 | | | | |
| | D10 | | INC. 20-23 | | | | | |
| 020 | | 210022-4 | BALL BEARING 626DDW | 1 | | | | |
| 021 | | 253332-6 | THIN WASHER 6 | 1 | | | | |
| 022 | | 253744-3 | FLAT WASHER 12 | 1 | | | | |
| 023 | | 211131-2 | BALL BEARING 6001DDW | 1 | | | | |
| 024 | | 347785-0 | SHAFT LOCK | 1 | | | | |
| 025 | | 232667-8 | COMPRESSION SPRING 6 | 1 | | | | |
| 026 | | 140Y24-5 | HANDLE COVER COMPLETE | 1 | | | | |
| | C10 | 263005-3 | RUBBER PIN 6 | 2 | | | | |
| 027 | | 251586-9 | FLAT HEAD SQUARE NECK BOLT M6X | 1 | | | | |
| 028 | | 140Y21-1 | GEAR HOUSING COMPLETE | 1 | | | | |
| | C10 | 213430-8 | O RING 28 | 1 | | | | |
| 029 | | 227855-0 | HELICAL GEAR 45 | 1 | | | | |
| 030 | | 961052-5 | RETAINING RING S-12 | 1 | | | | |
| 031 | | 213444-7 | O RING 30 | 1 | | | | |
| 032 | | 135948-8 | BEARING BOX ASSEMBLY | 1 | | | | |
| | D10 | | INC. 31 | | | | | |
| 033 | | 911223-4 | PAN HEAD SCREW M5X16 | 2 | | | | |
| 034 | | 211129-9 | BALL BEARING 6201DDW | 1 | | | | |
| 035 | | 325603-2 | SPINDLE | 1 | | | | |
| 036 | | 285858-0 | BEARING RETAINER 19-33 | 1 | | | | |
| 037 | | 213279-6 | O RING 18 | 1 | | | | |
| 038 | | 253397-8 | CUP WASHER 15 | 1 | | | | |
| 039 | | 224423-0 | INNER FLANGE 36 | 1 | | | | |
| 040 | | 224424-8 | OUTER FLANGE 36 | 1 | | | | |
| 041 | | 266510-9 | HEX. SOCKET HEX. BOLT M6X18 | 1 | | | | |
| 042 | | 252649-4 | THUMB NUT M6 | 1 | | | | |
| 043 | | 941151-9 | FLAT WASHER 6 | 1 | | | | |
| 044 | | 265939-6 | FLAT HEAD SQ. NECK BOLT M6X14 | 1 | | | | |
| 045 | | 162951-6 | BASE | 1 | | | | |
| 046 | | 266264-8 | H.S.SET SCREW(FLAT POINT)M5X6 | 1 | | | | |
| 047 | | 252103-8 | HEX. LOCK NUT M5-8 | 1 | | | | |
| 048 | | 266515-9 | + PAN HEAD SCREW M5 | 1 | | | | |
| 049 | | 257982-9 | BOW STOP RING E-8 | 1 | | | | |
| 050 | | 347399-5 | LEVER PLATE | 1 | | | | |
| 051 | | 264103-6 | HEX. NUT M6 | 1 | | | | |
| 052 | | 253111-2 | FLAT WASHER 6 | 1 | | | | |
| 053 | | 286036-5 | CAP | 1 | | | | |
| 054 | | 127748-0 | WATER SUPPLY COVER ASSEMBLY A | 1 | | | | |
| | D10 | | INC. 55-69,74 | | | | | |
| 055 | | 266034-5 | TAPPING SCREW CT 4X16 | 3 | | | | |
| 056 | | 413293-4 | WATER SUPPLY COVER R | 1 | | | | |
| 057 | | 232669-4 | COMPRESSION SPRING 7 | 1 | | | | |

B:DCC501TX2(H)

Interchange
 O : Yes
 X : No
 < : the new part can be substituted for the current.
 > : the current part can be substituted for the new.
 S : Interchangeable as a set.

