



40Vmax series

**XGT**

**40V** *Li-ion*  
**max**







# 40V *Li-ion* max

**High Power    Durability    Digital Communication**

Combination Hammer  
HR001G / HR002G / HR003G / HR004G

Recipro Saw  
JR001G

Impact Wrench  
TW001G

Driver Drill  
DF001G

Hammer Driver Drill  
HP001G

Impact Driver  
TD001G

Angle Grinder  
GA003G / GA004G / GA005G /  
GA006G / GA007G / GA008G /  
GA011G / GA012G / GA013G /  
GA014G / GA015G / GA016G

Circular Saw  
HS003G / HS004G

# Index

---

**4 — 40Vmax Li-ion Battery  
40Vmax Fast Charger**

**6 — Impact Driver**  
TD001G

**8 — Driver Drill  
Hammer Driver Drill**  
DF001G / HP001G

**10 — Impact Wrench**  
TW001G

**12 — Angle Grinder**  
GA003G / GA004G / GA005G  
GA006G / GA007G / GA008G  
GA011G / GA012G / GA013G  
GA014G / GA015G / GA016G

**14 — Combination Hammer**  
HR001G / HR002G / HR003G / HR004G

**16 — Circular Saw**  
HS003G / HS004G

**18 — Recipro Saw**  
JR001G







# 40Vmax Li-ion

Tool ◀▶ Battery ◀▶ Battery Charger  
**Digital communication**

XGT is a new system with its own tools, batteries, and chargers. A combination of innovative tool design and higher output batteries provide a genuine solution for high demand industrial users.

## Optimum power supply system and Optimum charging system

The XGT range of tools and batteries come with a built-in program, providing digital communication between the battery and tool. Allowing not only for the battery to talk with tool but also the tool to talk to the battery. Battery technology and motor engineering that work together for optimum performance.

### Optimum charging system

Auto maintenance system with two cooling fans for providing more optimum fast charging



## 40Vmax Li-ion Battery

**BL4025**  
2.5Ah



**BL4040**  
4.0Ah



### Charging time

BL4025	28 min
BL4040	45 min

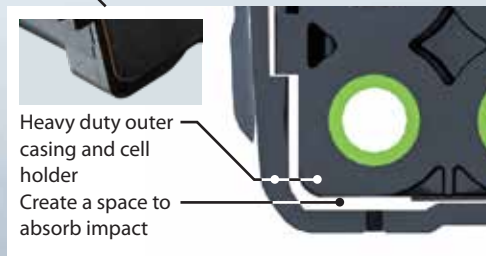
# 40Vmax Lithium-ion Battery Series

## Built Tough

High durability specifications specially designed for 40Vmax Li-Ion batteries



4-LED fuel gauge indicator



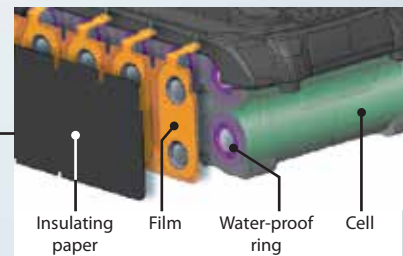
Heavy duty outer casing and cell holder  
Create a space to absorb impact

Shock absorption structure



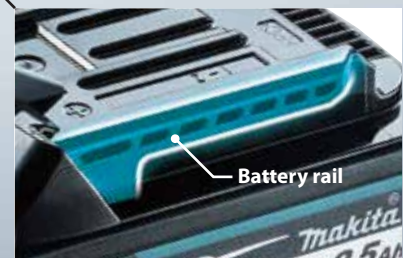
Terminal short-circuit prevention structure

The protection wall is provided between terminals against water and dust.



Waterproof Triple-layer Structure

prevents cell failure due to water and dust.



High Rigidity Battery Rails

Durable slide in battery rail that holds the battery and the tools firmly and securely to withstand high power products

## 40Vmax Fast Charger

The enlarged and raised LED light provides clearer indication of charging status.

DC40RA



Interchangeable Adapter

ADP10



Compatible with LXT Li-Ion batteries





## Impact Driver TD001G

# Delivers 220N · m of Max Torque

## 10 Tightening modes

No load speed / Impacts per min (min<sup>-1</sup>)

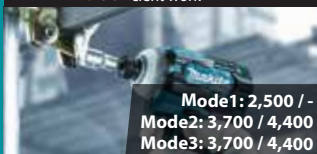
### Wood mode

driving at low speed until fastening begins



### 3 Bolt mode

with rotation auto stop for tightening/loosening bolts for more efficient work



### T1 Teks screw (thin metal)

Driving self-drilling screws to a thin gauge metal like a metal stud



### T2 Teks screw (thick metal)

Driving self-drilling screws to a thick gauge metal



4-Speed power selection



6-Assist modes

No load speed / Impacts per min (min<sup>-1</sup>)

Max



Hard



Medium



Soft







**BL**  
MOTOR **XPT**

**Rigid anvil holder  
with ball bearings  
reduces bit wobbling**



about  
**15%**  
**UP**

**Drove  $\varnothing 6.5 \times 120\text{mm}$  metal  
fastening screws**

<b>TD001G</b>	<b>115</b>	<b>2.5s</b>
Predecessor Model 18V 100		

Slow Fast



**One-touch bit  
installation**

**Variable speed  
control by trigger**

**Twin LED job light**



- **One-touch 4-speed selector**  
provides precise fastening control for a wide range of applications.
- **Quick-change memory mode**  
allows operator to rapidly change between two registered setting

**Work amount on a full battery charge\*1**  
Battery: BL4025

about <b>800 pcs</b> Drove 65mm coarse thread screws	about <b>160 pcs</b> Drove 120mm metal fastening screws
---	--

Capacity	Machine Screw: M4 - M8 (5/32" - 5/16") Standard Bolt: M5 - M16 (3/16" - 5/8") High Strength Bolt: M5 - M14 (3/16" - 9/16") Coarse thread (in length): 22 - 125 mm (7/8" - 4-7/8")
Hex Shank	6.35 mm (1/4")
No Load Speed (RPM)	Max / Hard / Med / Soft: 0 - 3,700 / 3,200 / 2,100 / 1,100
Impacts Per Minute (IPM)	Max / Hard / Med / Soft: 0 - 4,400 / 3,600 / 2,600 / 1,100
Max Fastening Torque	220 N·m (1,950 in.lbs.)
Fastening Torque	Hard / Med / Soft: 170 / 50 / 20 N·m (1,510 / 440 / 180 in.lbs.)
Sound Pressure Level	96 dB(A)
Sound Power Level	107 dB(A)
Dimensions (L x W x H)	w/ BL4025: 120x86x245 mm (4-3/4"x3-3/8"x9-5/8") w/ BL4040: 120x86x250 mm (4-3/4"x3-3/8"x9-7/8")
Net weight	1.7 - 2.0 kg (3.7 - 4.4 lbs.)

\*1 The test results depend to a great extent on the test material etc. **7**



## Hammer Driver Drill / Driver Drill HP001G / DF001G 13 mm (1/2")

# Delivers 140N · m of Max Torque

### Solid performance

especially in heavy duty applications by efficient brushless motor and XGT battery

**BL**  
MOTOR



### 41 electronical clutch setting (21-stage setting in High mode)

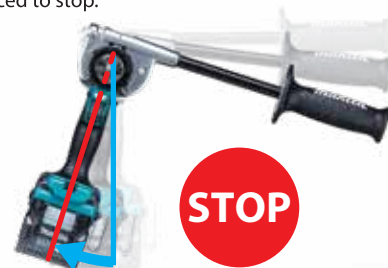
A wider range of torque can be covered than mechanical clutch



Easy jog dial  
adjustment  
with digital display

### **AFT** Active Feedback sensing Technology

turns the motor off if bit rotation is suddenly forced to stop.



about

**25%**  
**UP**

Drove ø8 x 400mm long construction screws into 400mm thick SPF

HP / DF001G	125
18V Predecessor Model	100

Slow

Fast

about

**35%**  
**UP**

Drilled holes through 38mm thick SPF with ø65mm (2 - 9/16") self-feeding bit

HP / DF001G	135
18V Predecessor Model	100

Slow

Fast





photo: HP001G

**BL** **AFT** **XPT**  
MOTOR



HP001G

DF001G

Compact overall length for  
easy handling and control

18V  
Predecessor  
Model



HP001G: 182mm

**Work amount on a full battery charge\*1**

Battery: BL4025

about <b>40</b> pcs	about <b>90</b> pcs	about <b>480</b> pcs
Drove ø8 x 400mm long construction screws into 400mm thick SPF	Drilled holes through 38mm thick SPF with ø65mm (2 - 9/16") self-feeding bit	Drilled holes through 38mm thick SPF with 7/8" Ship Auger bit

**Outstanding  
drilling speed**

**0 - 2600min<sup>-1</sup>**  
at High speed mode

**HP001G**

Capacity	Steel: 20 mm (13/16") / Wood (Auger-Bit): 50 mm (2")
	Wood (Self-Feed Bit): 76 mm (3") / Wood (Hole Saw): 152 mm (6")
	Masonry: 20 mm (13/16")
Chuck Capacity	1.5 - 13 mm (1/16 - 1/2")
Impacts Per Minute (IPM)	High / Low: 0 - 39,000 / 0 - 9,750
No Load Speed (RPM)	High / Low: 0 - 2,600 / 0 - 650
Max Fastening Torque	Hard / Soft: 140 / 68 N·m (1,240 / 600 in.lbs.)
Max lock torque	125 N·m (1,100 in.lbs.)
Sound Pressure Level	85 dB(A)
Sound Power Level	96 dB(A)
Dimensions (L x W x H)	w/ BL4025: 182x86x275 mm (7-1/8"x3-3/8"x10-7/8")
	w/ BL4040: 182x86x282 mm (7-1/8"x3-3/8"x11-1/8")
Net weight	2.7 - 3.0 kg (6.0 - 6.6 lbs.)

**DF001G**

Capacity	Steel: 20 mm (13/16")
	Wood (Auger-Bit): 50 mm (2") / Wood (Self-Feed Bit): 76 mm (3")
	Wood (Hole Saw): 152 mm (6")
Chuck Capacity	1.5 - 13 mm (1/16 - 1/2")
No Load Speed (RPM)	High / Low: 0 - 2,600 / 0 - 650
Max Fastening Torque	Hard / Soft: 140 / 68 N·m (1,240 / 600 in.lbs.)
Max lock torque	125 N·m (1,100 in.lbs.)
Sound Pressure Level	75 dB(A)
Dimensions (L x W x H)	w/ BL4025: 181x86x275 mm (7-1/8"x3-3/8"x10-7/8")
	w/ BL4040: 181x86x282 mm (7-1/8"x3-3/8"x11-1/8")
Net weight	2.7 - 3.0 kg (5.9 - 6.6 lbs.)

\*1 The test results depend to a great extent on the test material etc. **9**





## Impact Wrench TW001G 3/4" (19 mm)

# Over 2,000 N · m of Nut-Busting Torque

### Electronic 4-stage impact power selection

enables user to control the power and speed depending on the applications.



No load speed  
(min<sup>-1</sup>)

Max: 0-1,800

Hard: 0-1,400

Medium: 0-1,150

Soft: 0-950

Impacts per minutes  
(min<sup>-1</sup>)

Max: 0-2,500

Hard: 0-2,400

Medium: 0-2,200

Soft: 0-1,900



### Forward and reverse rotation auto stop mode



	Forward	Reverse
<b>mode 1</b>	Stops immediately after impact is detected	Stops immediately after the bolt/ nut gets loosened
<b>mode 2</b>	Stops approximately 0.5 seconds after impact is detected	Stops approximately 0.2 seconds after the bolt/ nut gets loosened
<b>mode 3</b>	Stops approximately 1 second after impact is detected	Shift to 230 min <sup>-1</sup> after the bolt/ nut gets loosened

### High power BL Motor

**BL**  
MOTOR







**BL**  
MOTOR **XPT**



Twin LED job light



#### Full speed mode

Switches between variable and full speed by pressing the button. Reaches full speed with fewer pull trigger to minimize user's fatigue in continuous work.



#### Work amount on a full battery charge\*1

Battery: BL4040

about **350 pcs**  
Tightening M27 high strength bolts

#### Compact overall length for easy handling and control

Predecessor  
Model 18V



Fastening Capacities	Standard Bolt: M12 - M36 (1/2" - 1-7/16") High Strength Bolt: M10 - M27 (3/8" - 1-1/16")
Square Drive	19 mm (3/4")
No Load Speed (RPM)	Max / Hard / Med / Soft: 0 - 1,800 / 0 - 1,400 / 0 - 1,150 / 0 - 950
Impacts Per Minute (IPM)	Max / Hard / Med / Soft: 0 - 2,500 / 0 - 2,400 / 0 - 2,200 / 0 - 1,900
Max Fastening Torque	1,630 N·m (1,200 ft.lbs.)
Dimensions (L x W x H)	w/ BL4025: 217x94x297 mm (8-1/2"x3-11/16"x11-3/4") w/ BL4040: 217x94x303 mm (8-1/2"x3-11/16"x11-7/8")
Net weight	3.9 - 4.2 kg (8.6 - 9.3 lbs.)

\*1 The test results depend to a great extent on the test material etc. **11**





## Angle Grinder

Slide switch: GA003G / GA004G / GA005G / GA006G / GA007G / GA008G

Paddle switch: GA011G / GA012G / GA013G / GA014G / GA015G / GA016G

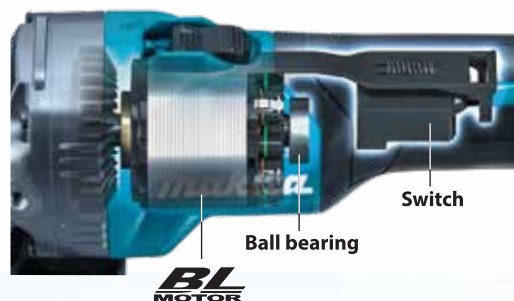
100 mm (4") 115 mm (4-1/2") 125 mm (5") 100 mm (4") 115 mm (4-1/2") 125 mm (5")

# Delivers same power as 1,000W corded grinders

## High durability

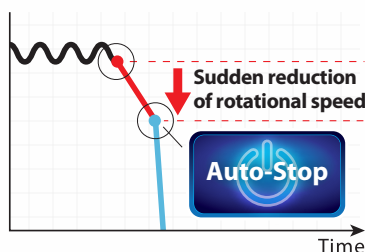
- Large ball bearing supports the motor.
- New switch design to reduce contact weariness.

No load speed:  
**8,500min.<sup>-1</sup>**



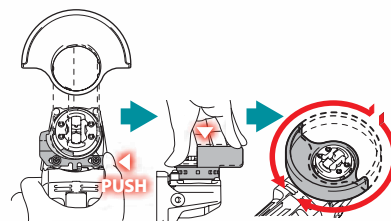
## AFT Active Feedback sensing Technology

Shuts down the tool to protect the user, if the rotation speed suddenly slows down.



## New toolless wheel cover

allows for fast and easy angle adjustment and installation / removal of wheel cover.



about  
**40% UP**

Cut concrete at depths of 20mm

**GA005G 140**

18V Predecessor Model 100

Slow

Fast

Work amount on a full battery charge<sup>\*1</sup>

Battery: BL4040

about **7m**

Cutting depths: 20mm

## Accessories

**Dust collection wheel guard**

191F81-2

191G06-2







**BL** **AFT** **XPT** **(BRAKE)**

GA003G / GA004G / GA005G /  
GA011G / GA012G / GA013G

### Slide Switch



GA005G

### Paddle Switch



GA013G

Easy-to-hold slim grip

	Wheel Diameter	Switch	(BRAKE)
GA003G	100 mm (4")	Slide	✓
GA004G	115 mm (4-1/2")		
GA005G	125 mm (5")		
GA006G	100 mm (4")		
GA007G	115 mm (4-1/2")		
GA008G	125 mm (5")	Paddle	✓
GA011G	100 mm (4")		
GA012G	115 mm (4-1/2")		
GA013G	125 mm (5")		
GA014G	100 mm (4")		
GA015G	115 mm (4-1/2")	—	—
GA016G	125 mm (5")		

	GA003G	GA004G	GA005G	GA006G	GA007G	GA008G
Wheel Diameter	100 mm (4")	115 mm (4-1/2")	125 mm (5")	100 mm (4")	115 mm (4-1/2")	125 mm (5")
Hole Diameter	16 mm (5/8")	22.23 mm (7/8")	22.23 mm (7/8")	16 mm (5/8")	22.23 mm (7/8")	22.23 mm (7/8")
No Load Speed (RPM)	8,500	8,500	8,500	8,500	8,500	8,500
Sound Pressure Level	81 dB(A)	81 dB(A)	81 dB(A)	81 dB(A)	81 dB(A)	81 dB(A)
Sound Power Level	92 dB(A)	92 dB(A)	92 dB(A)	92 dB(A)	92 dB(A)	92 dB(A)
Dimensions (L x W x H)	w/ BL4025: 398x117x150 mm (15-5/8"x4-5/8"x5-7/8")	w/ BL4025: 398x130x156 mm (15-5/8"x5-1/8"x6-1/8")	w/ BL4025: 398x140x156 mm (15-5/8"x5-1/2"x6-1/8")	w/ BL4025: 398x117x146 mm (15-5/8"x4-5/8"x5-3/4")	w/ BL4025: 398x130x152 mm (15-5/8"x5-1/8"x6")	w/ BL4025: 398x140x152 mm (15-5/8"x5-1/2"x6")
	w/ BL4040: 410x117x162 mm (16-1/8"x4-5/8"x6-3/8")	w/ BL4040: 410x130x168 mm (16-1/8"x5-1/8"x6-5/8")	w/ BL4040: 410x140x168 mm (16-1/8"x5-1/2"x6-5/8")	w/ BL4040: 410x117x158 mm (16-1/8"x4-5/8"x6-1/4")	w/ BL4040: 410x130x165 mm (16-1/8"x5-1/8"x6-1/2")	w/ BL4040: 410x140x165 mm (16-1/8"x5-1/2"x6-1/2")
Net weight	2.8 - 3.3 kg (6.2 - 7.3 lbs.)	2.9 - 3.5 kg (6.4 - 7.7 lbs.)	2.9 - 3.6 kg (6.4 - 7.9 lbs.)	2.7 - 3.3 kg (6.0 - 7.3 lbs.)	2.9 - 3.5 kg (6.4 - 7.7 lbs.)	2.9 - 3.5 kg (6.4 - 7.7 lbs.)
	GA011G	GA012G	GA013G	GA014G	GA015G	GA016G
Wheel Diameter	100 mm (4")	115 mm (4-1/2")	125 mm (5")	100 mm (4")	115 mm (4-1/2")	125 mm (5")
Hole Diameter	16 mm (5/8")	22.23 mm (7/8")	22.23 mm (7/8")	16 mm (5/8")	22.23 mm (7/8")	22.23 mm (7/8")
No Load Speed (RPM)	8,500	8,500	8,500	8,500	8,500	8,500
Sound Pressure Level	81 dB(A)	81 dB(A)	81 dB(A)	81 dB(A)	81 dB(A)	81 dB(A)
Sound Power Level	92 dB(A)	92 dB(A)	92 dB(A)	92 dB(A)	92 dB(A)	92 dB(A)
Dimensions (L x W x H)	w/ BL4025: 398x117x150 mm (15-5/8"x4-5/8"x5-7/8")	w/ BL4025: 398x130x156 mm (15-5/8"x5-1/8"x6-1/8")	w/ BL4025: 398x140x156 mm (15-5/8"x5-1/2"x6-1/8")	w/ BL4025: 398x117x146 mm (15-5/8"x4-5/8"x5-3/4")	w/ BL4025: 398x130x152 mm (15-5/8"x5-1/8"x6")	w/ BL4025: 398x140x152 mm (15-5/8"x5-1/2"x6")
	w/ BL4040: 410x117x162 mm (16-1/8"x4-5/8"x6-3/8")	w/ BL4040: 410x130x168 mm (16-1/8"x5-1/8"x6-5/8")	w/ BL4040: 410x140x168 mm (16-1/8"x5-1/2"x6-5/8")	w/ BL4040: 410x117x158 mm (16-1/8"x4-5/8"x6-1/4")	w/ BL4040: 410x130x165 mm (16-1/8"x5-1/8"x6-1/2")	w/ BL4040: 410x140x165 mm (16-1/8"x5-1/2"x6-1/2")
Net weight	2.8 - 3.4 kg (6.2 - 7.5 lbs.)	3.0 - 3.6 kg (6.6 - 7.9 lbs.)	3.0 - 3.6 kg (6.6 - 7.9 lbs.)	2.8 - 3.3 kg (6.2 - 7.3 lbs.)	2.9 - 3.5 kg (6.4 - 7.7 lbs.)	2.9 - 3.6 kg (6.4 - 7.9 lbs.)

\*1 The test results depend to a great extent on the test material etc. **13**





## Combination Hammer

HR001G / HR002G / HR003G / HR004G  
28 mm (1-1/8")

### AVT Anti Vibration Technology

Vibration Level  
**7.0 m/s<sup>2</sup>**



### AFT Active Feedback sensing Technology

turns the motor off if bit rotation is suddenly forced to stop.  
(HR001G / HR002G)



### Redesigned Tool Balance for Increased Operability

The tool's center of gravity is located as close to the handle grip as possible, providing more control and less fatigue.

Lightweight

**3.9 kg**

Model: HR001G  
Battery: BL4025



### AWS Auto-start Wireless System

connects to compatible vacuum cleaner with Bluetooth. The vacuum cleaner automatically runs while the switch is on.  
(HR001G / HR002G)

**Bluetooth**

Switch on the tool



Vacuum cleaner is activated





Work amount on a full battery charge\*1  
Battery: BL4025

about **120 pcs**

Drilled holes a depth of 60mm  
(2-3/8") with ø12.5mm bit



**BL**  
MOTOR

**AFT**

HR001G / HR002G

**AWS**

HR001G / HR002G

**AVT**

**SOFT**  
NOLOAD

HR001G / HR002G

**XPT**



Filter cleaning mechanism

Large dust box cover can be opened simply by pushing single push button for easy dust cleaning.



Quick change drill chuck  
(HR002G / HR004G)

#### Dust Extraction System

#### DX12 / DX14



	Quick change drill chuck	AFT	AWS	Dust Extraction System
HR001G	—	✓	✓	DX12
HR002G	✓	✓	✓	DX14
HR003G	—	—	—	DX12
HR004G	✓	—	—	DX14

	HR001G / HR003G	HR002G / HR004G
Impact Energy	EPTA-Procedure 05/2009: 2.8 J	EPTA-Procedure 05/2009: 2.9 J
Capacity	Concrete / Steel / Wood / Core Bit / Diamond Core Bit (Dry Type): 28 / 13 / 32 / 54 / 65 mm	Concrete / Steel / Wood / Core Bit / Diamond Core Bit (Dry Type): 28 / 13 / 32 / 54 / 65 mm
Blows Per Minute (BPM)	(1-1/8" / 1/2" / 1-1/4" / 2-1/8" / 2-9/16")	(1-1/8" / 1/2" / 1-1/4" / 2-1/8" / 2-9/16")
No Load Speed (RPM)	0 - 5,000	0 - 5,000
Chuck Capacity	0 - 980	0 - 980
Sound Pressure Level	1.5 - 13 mm (1/16 - 1/2")	1.5 - 13 mm (1/16 - 1/2")
Sound Power Level	95 dB(A)	93 dB(A)
Dimensions (L x W x H)	106 dB(A)	104 dB(A)
	w/ BL4025: 358x102x232 mm (14-1/8"x4"x9-1/8")	w/ BL4025: 389x102x232 mm (15-1/4"x4"x9-1/8")
	w/ BL4040: 373x102x238 mm (14-3/4"x4"x9-3/8")	w/ BL4040: 404x102x238 mm (15-7/8"x4"x9-3/8")
Net weight	3.9 - 4.6 kg (8.6 - 10.1 lbs.)	HR002G: 4.1 - 4.6 kg (9.0 - 10.1 lbs.) HR004G: 4.0 - 4.5 kg (8.8 - 9.9 lbs.)

\*1 The test results depend to a great extent on the test material etc.





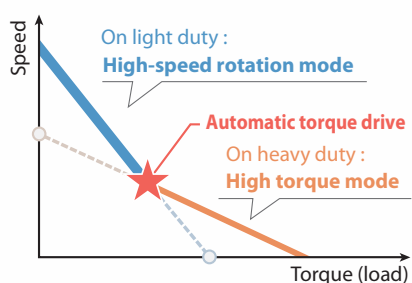
photo: HS003G

## Circular Saw HS003G / HS004G 190 / 185 mm (7-1/2" / 7-1/4")

### **ADT** Automatic torque Drive Technology

automatically changes the cutting speed according to load conditions for an optimum operation:

- On light duty: high-speed rotation mode
- On heavy duty: high torque mode



### **AWS** Auto-start Wireless System

connects to compatible vacuum cleaner with Bluetooth. The vacuum cleaner automatically runs while the switch is on.



**Bluetooth**

Switch on  
the tool



Vacuum  
cleaner  
is activated

### Compatible with guide rail without adapter (HS004G only)



### Blower function



### Twin LED Job light



### Max. bevel capacity



### Overload alert using driving mode lamp





photo: HS004G

**BL**  
MOTOR

**ADT**

**AWS**

**(BRAKE)**

**XPT**



photo: HS003G



photo: HS004G

**Tool hanger**  
(optional accessory)



**Work amount on a full battery charge\***

Battery: BL4040

about **145 pcs**

Melapi  
(thickness=60mm / width=300mm)

about **310 pcs**

SPF 2 x 10

**Lightweight**

**4.4 kg**

Model: HS003G  
Battery: BL4040

**Max cutting capacity at 90°**

**185mm      190mm**  
**66 / 68.5 mm**

Model: HS003G

	HS003G	HS004G
Blade Diameter	190 / 185 mm (7-1/2" / 7-1/4")	190 / 185 mm (7-1/2" / 7-1/4")
Max Cutting Capacity	90°: 68.5 / 66 mm (2-11/16" / 2-5/8") 45°: 47.5 / 45.5 mm (1-7/8" / 1-13/16") 56°: 35.5 / 34 mm (1-3/8" / 1-5/16")	90°: 62.5 / 60 mm (2-7/16" / 2-3/8") 45°: 44.5 / 43 mm (1-3/4" / 1-11/16") 48°: 42 / 41 mm (1-5/8" / 1-5/8")
No Load Speed (RPM)	6,000	6,000
Dimensions (L x W x H)	w/ BL4025: 316x200x290 mm (12-1/2"x7-7/8"x11-3/8") w/ BL4040: 331x200x290 mm (13"x7-7/8"x11-3/8")	w/ BL4025: 322x210x290 mm (12-5/8"x8-1/4"x11-3/8") w/ BL4040: 337x210x290 mm (13-1/4"x8-1/4"x11-3/8")
Net weight	4.1 - 4.4 kg (9.0 - 9.7 lbs.)	4.4 - 4.7 kg (9.7 - 10.4 lbs.)

\*1 The test results depend to a great extent on the test material etc. **17**





## Recipro Saw JR001G

# High Durable Structure



Redesigned lubricating mechanism of slider section

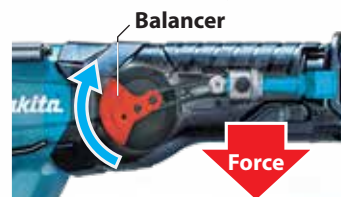
**Rigid shoe**  
Thickness and the shape are redesigned

**Rubber joint structure**  
The tool body is separated into the upper and lower housings which joined with vibration absorbing cushion rubbers to reduce load on battery and terminal.

Easy blade ejection lever



Smooth cutting with vertical crank system



Tool-less shoe adjustment





**BL** MOTOR **XPT**



**Lightweight**

**4.2kg**

Battery: BL4025

**Tool hanger**



## High Cutting Speed

Metal  
Cutting speed  
about  
**10%  
UP**

ø25.4mm (1") Carbon steel pipe

JR001G	<b>110</b>
18Vx2 Predecessor Model	100

Slow

Fast

Wood  
Cutting speed  
about  
**35%  
UP**

SPF 2 x 10

JR001G	<b>135</b>
18Vx2 Predecessor Model	100

Slow

Fast

### Work amount on a full battery charge<sup>\*1</sup>

Battery: BL4040

about **130pcs**  
ø25.4mm (1") Carbon steel pipe

about **155pcs**  
SPF 2 x 10

Length of Stroke	32 mm (1-1/4")
Strokes Per Minute (SPM)	High / Low: 0 - 3,000 / 0 - 2,300
Capacity	Pipe: 130 mm (5-1/8") / Wood: 255 mm (10")
Sound Pressure Level	85 dB(A)
Sound Power Level	96 dB(A)
Dimensions (L x W x H)	w/ BL4025: 457x88x233 mm (18"x3-1/2"x9-1/8")
	w/ BL4040: 472x88x239 mm (18-5/8"x3-1/2"x9-3/8")
Net weight	4.2 - 4.5 kg (9.3 - 9.9 lbs.)

<sup>\*1</sup> The test results depend to a great extent on the test material etc.





## **Makita Service Centre:**

### **Assam**

Guwahati: +91-36-1351-4572

### **Maharashtra**

Mumbai: +91-22-4974-4092

Pune: +91-20-46300061

### **Delhi**

New Delhi: +91-93192-90771

Chawri Bazar: +91-11-4914-5416

### **Madhya Pradesh**

Indore: +91-73135-93608

### **Gujarat**

Ahmedabad: +91-96563-49664

Vadodara: +91-82383-57480

### **Telangana**

Secunderabad: +91-40-4003-8000

### **Jharkhand**

Jamshedpur: +91-657-2383024

### **Tamil Nadu**

Chennai: +91-44-2479-2522

Trichy: +91-96002-91989

### **Karnataka**

Bengaluru: +91-08-2222-8200

Peenya: +91-90085-46546

### **Uttarakhand**

Rudrapur: +91-70425-97756

### **Kerala**

Cochin: +91-85904-32003

### **West Bengal**

kolkata: +91-85850-72679



**H.O.: Makita Power Tools India Pvt. Ltd.**

Unit II Sy. Nos. 93/3 & 93/4, Koralur Village,  
Kasaba Hobli, Hoskote Taluk, Bengaluru - 560067

Tel: +91-80-2205-8200

Email: info@makita.in Website: www.makita.in



Follow us



**Marketed By:**