



For Cleaning **DVC660**



For Dust Collecting **DVC665**

HEPA filter

Exhaust air is as clean as that of air cleaner.

HEPA Filter is used as the main filter to capture very fine particles effectively.

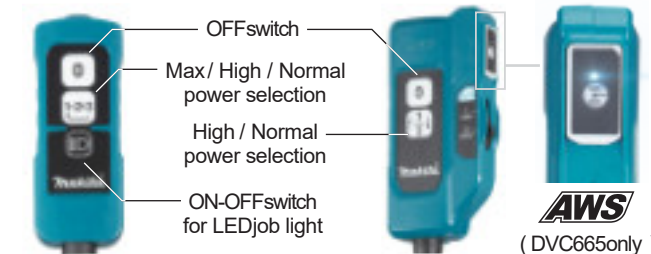
Able to capture 99.97% of particles as small as 0.3-1 μ m



Controller

DVC660

DVC665



- OFF switch
- Max / High / Normal power selection
- High / Normal power selection
- ON-OFF switch for LED job light

AWS
(DVC665 only)

LED job light (DVC660 only)
convenient for operation in dark job sites

Cleaning mechanism for paper dust bag

Even when vacuuming concrete dust tending to clog filters, actuation of this mechanism allows to collect approximately up to 4.0L, 70% of the paper dust bag capacity. (approximately 3.0L [50%] when not actuated)



This mechanism can be actuated:
 · Automatically by the vibration due to walking
 · Manually by operating a lever by hand



Side Battery



AWS Auto-start Wireless System DVC665 only

The wireless activation function enables clean and comfortable operation. By connecting a supported tool to the cleaner, you can run the cleaner automatically along with the switch operation of the tool.



wireless unit

Bluetooth AWS connects to power tool with Bluetooth. The Bluetooth word mark and logos are registered trademarks owned by the Bluetooth SIG, Inc. and any use of such marks by Makita is under license. Other trademarks and trade names are those of their respective owners.

Expanding AWS Line-up



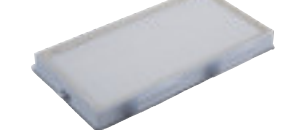
Optional Accessories



Hose band
Part No. 166116-2



Filter set assembly
Part No. 191D12-9
HEPA filter



Dust bag assembly
Part No. 191C30-1



Filter bag set 10pcs / set
Part No. 191C26-2

