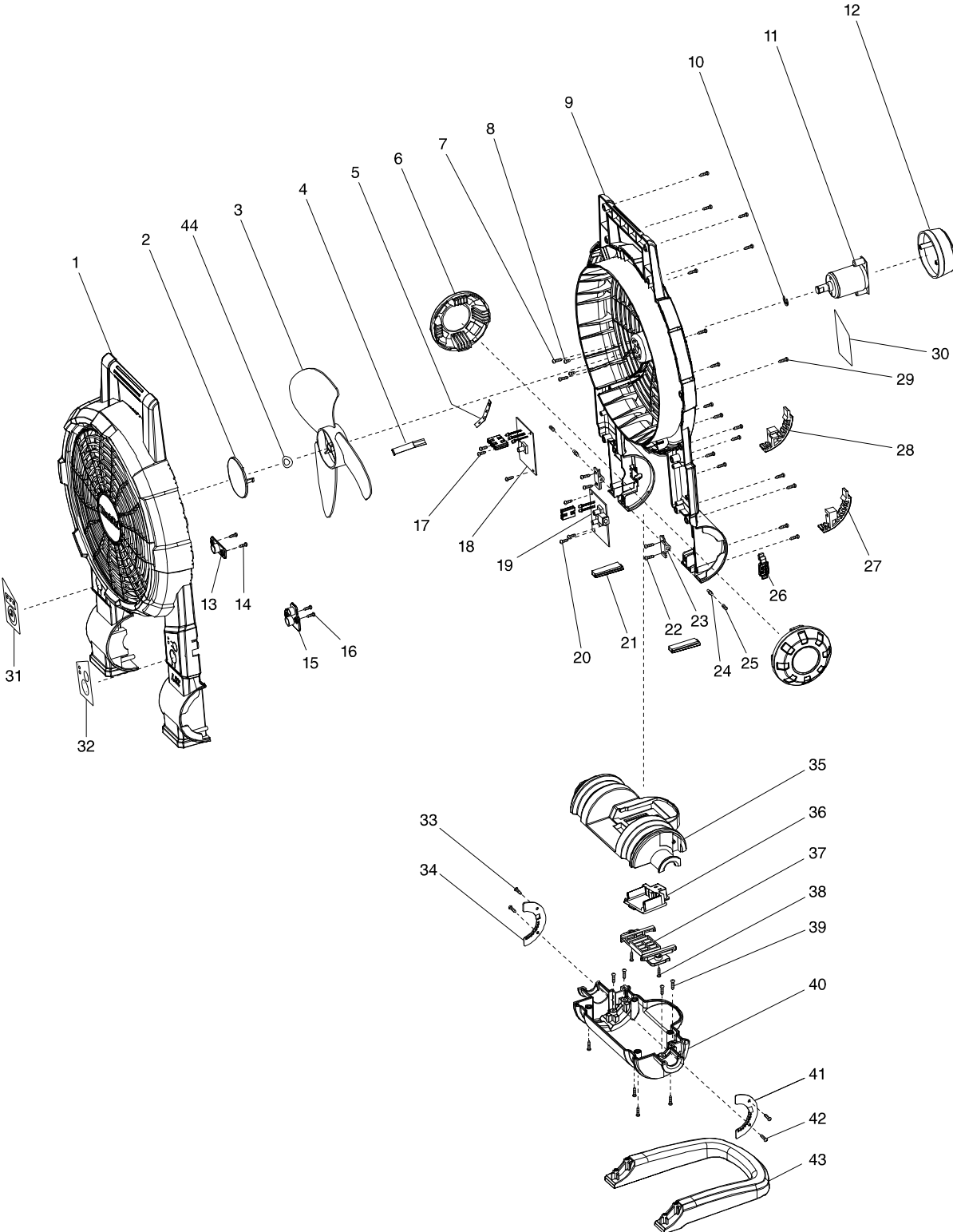


Model No. DCF201 CORDLESS FAN



Model No. DCF201 CORDLESS FAN

Item	Parts No.	Description	I/C	QTY	N/O	Opt. 1	Opt. 2	NOTE
001	TE00000002	HOUSING SET (BLUE)		1	*			
D10		INC. 9			*			
001-1	TE00000166	HOUSING SET (BLUE)	<	1				
D10		INC. 9						
002	TE00000003	FAN BLADE COVER		1				
003	TE00000004	FAN BLADE		1				
004	TE00000005	WIRE COVER A		1				
005	TE00000006	WIRE COVER B		1				
006	TE00000007	SIDE COVER		2				
007	TE00000028	TAPPING SCREW 3X14		2				
008	TE00000030	P.H.SCREW M3X5		2				
009	TE00000002	HOUSING SET (BLUE)		1	*			
D10		INC. 1			*			
009-1	TE00000166	HOUSING SET (BLUE)	<	1				
D10		INC. 1						
010	TE00000009	STOP RING		1				
011	TE00000041	MOTER ASSEMBLY		1				
012	TE00000011	MOTOR COVER		1				
013	TE00000012	BUTTON PROTECTOR R		1				
014	TE00000029	TAPPING SCREW 3X10		2				
015	TE00000013	BUTTON PROTECTOR L		1				
016	TE00000029	TAPPING SCREW 3X10		2				
017	TE00000029	TAPPING SCREW 3X10		3				
018	TE00000042	TIME PCB BOARD		1				
019	TE00000043	SWITCH PCB BOARD		1		85423900		
020	TE00000029	TAPPING SCREW 3X10		3				
021	TE00000016	FRONT FOOT		2				
022	TE00000028	TAPPING SCREW 3X14		4				
023	TE00000017	SPRING HOLDER		2				
024	TE00000008	PIN		2				
025	TE00000027	SPRING		2				
026	TE00000018	ADAPTER SOCKET CAP		1				
027	TE00000019	REAR FOOT L		1				
028	TE00000020	REAR FOOT R		1				
029	TE00000028	TAPPING SCREW 3X14		1				
031	TE00000032	SWITCH LABEL L		1				
032	TE00000033	SWITCH LABEL R		1				
033	TE00000029	TAPPING SCREW 3X10		2				
034	TE00000025	CLUTCH PLATE R		1				
035	TE00000021	BASE SET		1				
D10		INC. 40						
036	TE00000022	TERMINAL		1	*			
036-1	TE00000247	TERMINAL	O	1				
037	TE00000023	TERMINAL HOLDER		1				
038	TE00000028	TAPPING SCREW 3X14		2				
039	TE00000028	TAPPING SCREW 3X14		8				
040	TE00000021	BASE SET		1				
D10		INC. 35						

