



Metal Shear
JS3201 3.2mm (10Ga)

Easy and Comfortable Handling

Max cutting capacities:

3.2mm (10Ga)

Steel up to 400 N/mm²

Minimum cutting radius

R=50 mm

Steel up to 400 N/mm² (2.3mm)

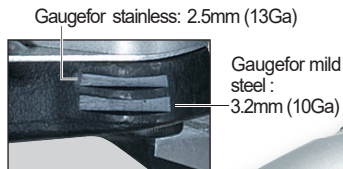


710W continuous rating input

Low noise level at only 81dB(A)

Gauge

The groove on the yoke serves as a thickness gauge for shearing mild or stainless steel plate. If the material fits within the groove, it is shearable.



Ergonomically designed handle with rubberized soft grip

provides comfortable grip and more control while minimizing hand fatigue and pain.



On-tool storage for hex wrench

Hex wrench can be stored on the model for operator's convenience.

Protector

enables smooth cutting while protecting the motor housing from scrap metal.

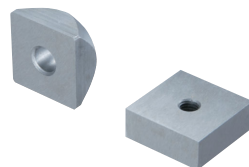


Part standardization

Blade section : same as Metal shear JS3200

Shear blades set

Part No. 792287-5



Thickness gauge

(For setting shear blades at the proper gap)

Part No. 762007-1



Metal Shear

JS3201 3.2mm (10Ga)

303 mm

Continuous rating Input	710W
Capacity	Steel up to 400 N/mm ² : 3.2mm (10Ga) Steel up to 600 N/mm ² : 2.5mm (13Ga) Steel up to 800 N/mm ² : 1.5mm (17Ga) Aluminum up to 200 N/mm ² : 4.0mm (9Ga)
Min. cutting radius	50mm (2")
Strokes per minute (spm)	1,600
Dimensions (L x W x H)	213 x 90 x 239mm (8-3/8" x 3-1/2" x 9-3/8")
Net Weight*	3.4kg (7.4lbs)
Power supply cord	2.5m (8.2ft)

Double Insulation

Standard Equipment:

Thickness gauge: 762007-1(1) Hex. wrench: 4 783202-0(1)
Shear blade: 792287-5(1)

*weight according to EPTA-Procedure 01/2003

Items of standard equipment and specifications may vary by country or area.



Makita Power Tools India Pvt. Ltd.

Unit II Sy. Nos. 93/3 & 93/4, Koralur Village, Kasaba Hobli,
Hoskote Taluk, Bengaluru - 560067
Email: info@makita.in Website: www.makita.in