



Nibbler JN3201 3.2mm (10Ga)

High cutting capacity

Steel up to 400 N/mm² : 3.2mm (10Ga)

Steel up to 600 N/mm² : 2.5mm (13Ga)

Steel up to 800 N/mm² : 1.0mm (20Ga)

Aluminum up to 200 N/mm² : 3.5mm (10Ga)



710W continuous rating input

Low noise level at only 81dB(A)

Gauge

The groove on the yoke serves as a thickness gauge for shearing mild or stainless steel plate. If the material fits within the groove, it is shearable.

Steel up to 600 N/mm²: 2.5mm (13Ga)



Steel up to 600 N/mm²: 3.5mm (10Ga)

Ergonomically designed handle with rubberized soft grip

provides comfortable grip and more control while minimizing hand fatigue and pain.



On-tool storage for hex wrench

Hex wrench can be stored on the model for operator's convenience.

Part standardization

Blade section : same as Nibbler JN3200



Please make a hole beforehand Ø42mm



Minimum cutting radius
Outer edge: 128mm (5-1/16")
Inner edge: 120mm (4-3/4")

Die

Part No. 792292-2



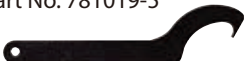
Punch

Part No. 792728-1



Wrench 50

Part No. 781019-5

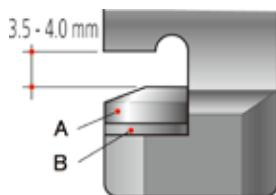


Washer

Part No. 341796-7

(To keep clearance of 3.5 to 4.0mm, use a washer or two under the die when installing a resharpened die.)

A. Die
B. Washer



Nibbler

JN3201 3.2mm (10Ga)

303

Continuous rating Input Capacity	710W Steel up to 400 N/mm ² : 3.2mm (10Ga) Steel up to 600 N/mm ² : 2.5mm (13Ga) Steel up to 800 N/mm ² : 1.0mm (20Ga) Aluminum up to 200 N/mm ² : 3.5mm (10Ga)
Min. cutting radius	Outer edge: 128mm (5-1/16") Inner edge: 120mm (4-3/4")
Strokes per minute (spm)	1,300
Dimensions (L x W x H)	225 x 90 x 254mm (8-7/8" x 3-1/2" x 10")
Net Weight*	3.4kg (7.4lbs)
Power supply cord	2.5m (8.2ft)
Double Insulation	Standard Equipment : Punch, Die, Wrench 50, Hex wrench, Washer

*weight according to EPTA-Procedure 01/2003

Items of standard equipment and specifications may vary by country or area.

Makita Corporation

3-11-8 Sumiyoshi-cho, Anjo, Aichi, 446-8502 Japan

PRINTED IN JAPAN BD-AC