

710W continuous rating input

Low noise level at only 81dB(A)

Gauge

The groove on the yoke serves as a thickness gauge for shearing mild or stainless steel plate. If the material fits within the groove, it is shearable.

Steel up to 600 N/mm² : 2.5mm (13Ga)



Steel up to 600 N/mm² : 3.5mm (10Ga)

Ergonomically designed handle with rubberized soft grip

provides comfortable grip and more control while minimizing hand fatigue and pain.



On-tool storage for hex wrench

Hex wrench can be stored on the model for operator's convenience.

Part standardization

Blade section : same as Nibbler JN3200



Die

Part No. 792292-2

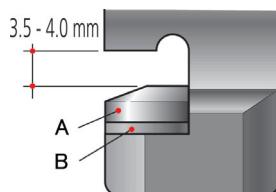


Washer

Part No. 341796-7

(To keep clearance of 3.5 to 4.0mm, use a washer or two under the die when installing a resharpened die.)

A. Die
B. Washer



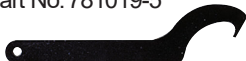
Punch

Part No. 792728-1



Wrench 50

Part No. 781019-5



Nibbler

JN3201 3.2mm (10Ga)

303

Continuous rating Input	710W
Capacity	Steel up to 400 N/mm ² : 3.2mm (10Ga) Steel up to 600 N/mm ² : 2.5mm (13Ga) Steel up to 800 N/mm ² : 1.0mm (20Ga) Aluminum up to 200 N/mm ² : 3.5mm (10Ga)
Min. cutting radius	Outer edge : 128mm (5-1/16") Inner edge : 120mm (4-3/4")
Strokes per minute (spm)	1,300
Dimensions (L x W x H)	225 x 90 x 254mm (8-7/8" x 3-1/2" x 10")
Net Weight*	3.4kg (7.4lbs)
Power supply cord	2.5m (8.2ft)
	Standard Equipment:
Double Insulation	Wrench: 50 781019-5(1), Hex. wrench: 3 783201-2(1), Washer: 341796-7(2)

*weight according to EPTA-Procedure 01/2003

Items of standard equipment and specifications may vary by country or area.



Makita Power Tools India Pvt. Ltd.

Unit II Sy. Nos. 93/3 & 93/4, Koralur Village, Kasaba Hobli,
Hoskote Taluk, Bengaluru - 560067
Email: info@makita.in Website: www.makita.in