

Satisfy Professional's Needs



# Cordless Grass Trimmer

**DUR187U** Bike handle / **DUR187L** Loop handle

One-piece shaft

**DUR188U** Bike handle / **DUR188L** Loop handle

Split shaft



## Low noise and easy handling

# ADT BL MOTOR

# XPT

EXTREME PROTECTION TECHNOLOGY

# 18V LITHIUM-ION

# Just Turn It On!

No Need for Gas, No Need for Plug-In

# Environment-friendly

Zero emission and minimum noise pollution

# ADT

Automatic torque Drive Technology

RPM is automatically shifted to 4,000 - 6,000  $\text{min}^{-1}$  according to density of weeds.

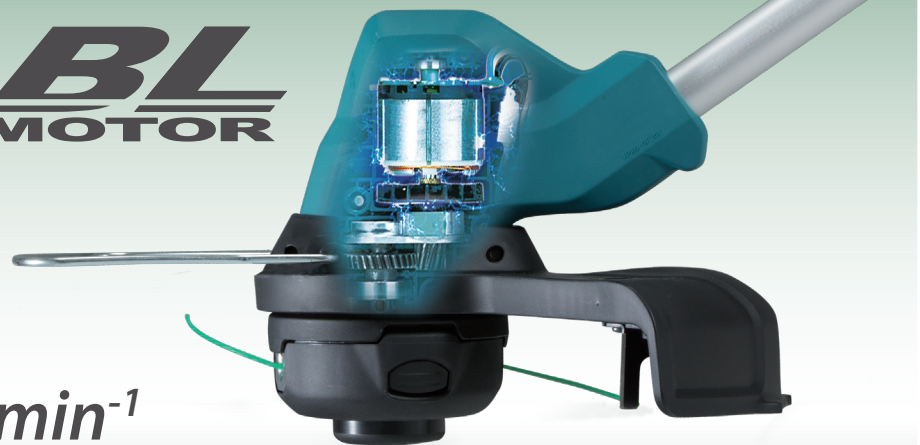


Also the speed can be changed between 4,000/5,000/6,000 manually by pressing the button.

## High trimming performance obtained by placing brushless DC motor on the bottom side of the shaft

High power Brushless DC motor is placed close to the cutting tool to reduce mechanical loss, delivering high rotational speed and high torque more effectively for fast and persistent trimming.

**BL**  
MOTOR



**Max. 6,000** $\text{min}^{-1}$

## High Performance with Brushless DC Motor

### Brushless DC motor

- :: Maintenance-free due to no brush
- :: Energy production is more efficient than brushed DC motor because of no friction loss caused by brushes, enabling to lower amperage for reduced heat production and increased work amount on a single full battery charge.

### More work amount on a single full battery charge

- :: Thanks to the very efficient energy production of BLDC motor, work amount on a single full battery charge is increased.
- :: Life time work amount of a battery is increased, reducing the battery cost.

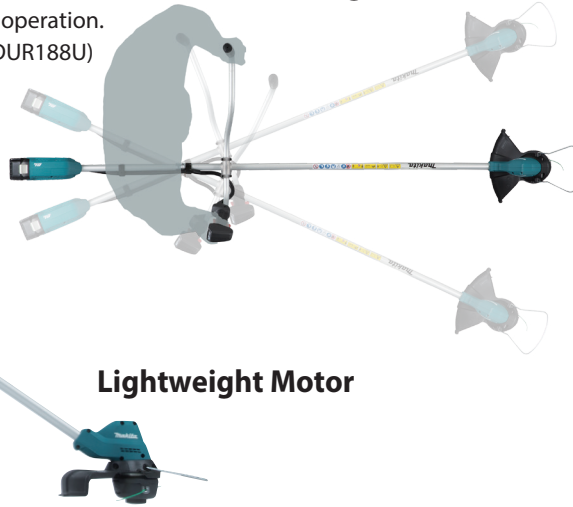
### Durable against continuous long operation

- :: Use of BLDC motor lowers heat production; the temperature rise at housing surface can be reduced well even in hard industrial applications requiring continuous long operation.

# Lightweight design with excellent tool balance for easy handling during operation



**Ergonomic bike handle off-set design**  
comfortable operation.  
(DUR187U/ DUR188U)



**Ergonomically designed, large loop handle**  
(DUR187L/ DUR188L)



**Lightweight Motor**

Photo: DUR187U

## All control devices are conveniently located near your

hand.



**Main power button**

**Speed indicator**

shows three rpm levels.  
Also shows the status of overload,  
overheat and overdischarge.

**Auto speed control indicator (ADT mode)**

**Power lamp**

**Reverse button**

for easy removal of grass clippings  
from the cutting tool

After 1.5 seconds, machine stops.  
Switch position will be returned  
back to "Forward" automatically  
after stopping.

## Thanks to battery power source;

- You can have a quick and easy start without mixing fuel or pulling recoil rope.
- Easy maintenance



## Grass clippings can be removed

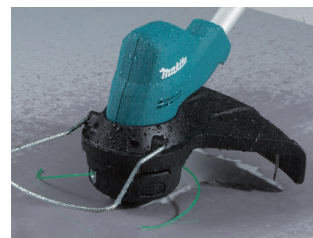
If grass clippings stuck...



Equipped with reverse switch for easy removal of grass clippings stuck on the blade; grass clippings can be removed from and around the blade by slow reverse rotation of the blade.

## Extreme Protection Technology

Enhanced Dust and Drip-resistant Performance ensure reliable operation even under bad weather.



**XPT**  
EXTREME PROTECTION TECHNOLOGY

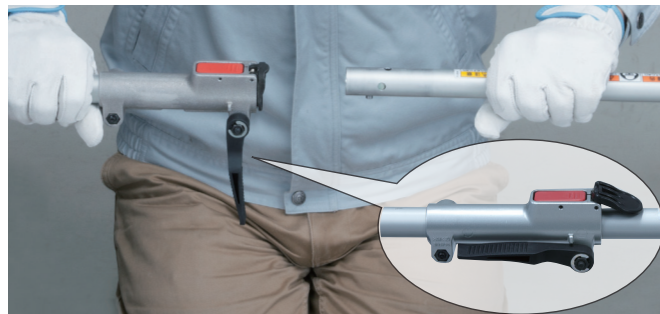


## Excellent Mobility (DUR188U / DUR188L)

Split system provides easier mobility.



Lever style lock system allows for quick toolless installation and replacement of the attachment.



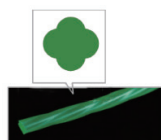
## Accessories

Nylon cutting head (95-M8L)



Part No. 198386-5

Four-leaf clover-like cross section (ø 2.0mm)



Size	Part No.
2.0mmx15m	197472-9
2.0mmx160m	197473-7
2.0mmx30m	197474-5
2.0mmx280m	197475-3

Plastic blade 255 set



Replacement plastic blade  
12pcs.set  
Part No. 198427-7

Part No. 198385-7

## Work amount (min)

on a single full battery charge

No load speed

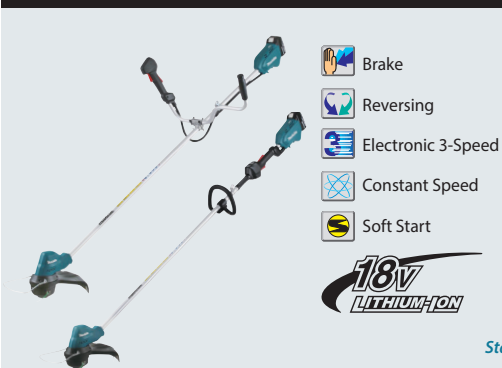
High / Middle / Low : 6,000 / 5,000 / 4,000 min<sup>-1</sup>

Cutting blade	Battery	No load			With load*			
		High	Middle	Low	High	Middle	Low	
with Nylon cord diameter: ø2.0 mm (Two Strings come out from separate openings)	Photo: Plastic blade	BL1860B	66	100	168	46	54	124
		BL1850B	55	83	139	38	45	103
		BL1840B	43	65	109	30	35	80
		BL1830B	32	48	81	22	26	60
		BL1820B	23	35	58	16	19	43
		BL1815N	17	25	42	12	14	31
with Plastic blade Trimming width ø255mm (Three-blade cutter)	Photo: Plastic blade	BL1860B	123	146	219	38	75	115
		BL1850B	102	121	181	31	62	94
		BL1840B	80	94	142	24	48	74
		BL1830B	59	70	105	19	36	55
		BL1820B	43	51	76	14	26	39
		BL1815N	31	37	55	10	19	29

\*Depends on the density of weeds

## Cordless Grass Trimmer

## DUR187U / DUR187L One-piece shaft



- Brake
- Reversing
- Electronic 3-Speed
- Constant Speed
- Soft Start

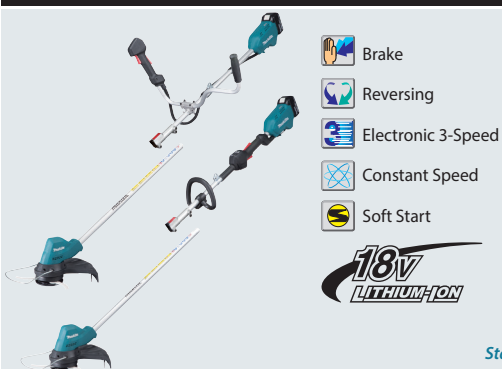


	DUR187U	DUR187L
<b>Cutting Width</b>	Nylon Cutting Head: 300 mm (11-3/4") Plastic Blade: 255 mm (10")	300 mm (11-3/4") 255 mm (10")
<b>No Load Speed (RPM)</b>	High / Medium / Low / ADT Mode: 4,000 / 5,000 / 6,000 / 4,000 - 6,000	4,000 / 5,000 / 6,000 / 4,000 - 6,000
<b>Spindle Size</b>	M8 x 1.25 LH	M8 x 1.25 LH
<b>Sound Pressure Level</b>	Nylon Cutting Head: 74 dB(A)	74 dB(A)
<b>Sound Power Level</b>	Nylon Cutting Head: 84 dB(A)	84 dB(A)
<b>Sound Pressure Level</b>	Plastic Blade: 79 dB(A)	79 dB(A)
<b>Sound Power Level</b>	Plastic Blade: 88 dB(A)	88 dB(A)
<b>Vibration Level</b>	Front / Rear: 2.5 / 2.5 m/s <sup>2</sup> or less	2.5 / 2.5 m/s <sup>2</sup> or less
<b>Dimensions (L x W x H)</b>	1,791x600x472mm (70-1/2"x23-5/8"x18-5/8")	1,791x258x232mm (70-1/2"x10-1/8"x9-1/8")
<b>Max Run Time (min)</b>	with BL1860B: 168	with BL1860B: 168
<b>Net weight</b>	BL1815N: 3.6 kg (7.9 lbs.) BL1860B: 3.9 kg (8.6 lbs.)	3.4 kg (7.4 lbs.) 3.7 kg (8.1 lbs.)

Standard Equipment: Shoulder Harness, Nylon Cutting Head, Plastic Blade, Accessory Bag, Hex Wrench, Battery, Charger

## Cordless Grass Trimmer

## DUR188U / DUR188L Split shaft



- Brake
- Reversing
- Electronic 3-Speed
- Constant Speed
- Soft Start



	DUR188U	DUR188L
<b>Cutting Width</b>	Nylon Cutting Head: 300 mm (11-3/4") Plastic Blade: 255 mm (10")	300 mm (11-3/4") 255 mm (10")
<b>No Load Speed (RPM)</b>	High / Medium / Low / ADT Mode: 4,000 / 5,000 / 6,000 / 4,000 - 6,000	4,000 / 5,000 / 6,000 / 4,000 - 6,000
<b>Spindle Size</b>	M8 x 1.25 LH	M8 x 1.25 LH
<b>Sound Pressure Level</b>	Nylon Cutting Head: 74 dB(A)	74 dB(A)
<b>Sound Power Level</b>	Nylon Cutting Head: 84 dB(A)	84 dB(A)
<b>Sound Pressure Level</b>	Plastic Blade: 79 dB(A)	79 dB(A)
<b>Sound Power Level</b>	Plastic Blade: 88 dB(A)	88 dB(A)
<b>Vibration Level</b>	Front / Rear: 2.5 / 2.5 m/s <sup>2</sup> or less	2.5 / 2.5 m/s <sup>2</sup> or less
<b>Dimensions (L x W x H)</b>	1,791x600x472mm (70-1/2"x23-5/8"x18-5/8")	1,791x258x232mm (70-1/2"x10-1/8"x9-1/8")
<b>Max Run Time (min)</b>	with BL1860B: 168	with BL1860B: 168
<b>Net weight</b>	BL1815N: 3.9 kg (8.5 lbs.) BL1860B: 4.2 kg (9.2 lbs.)	3.7 kg (8.1 lbs.) 4.0 kg (8.8 lbs.)

Standard Equipment: Shoulder Harness, Nylon Cutting Head, Plastic Blade, Accessory Bag, Hex Wrench, Cup, Battery, Charger

Items of standard equipment and specifications may vary by country or area. weight according to EPTA-Procedure 01/ver.2.1

# Makita Corporation

3-11-8 Sumiyoshi-cho, Anjo, Aichi, 446-8502 Japan

PRINTED IN JAPAN 201704