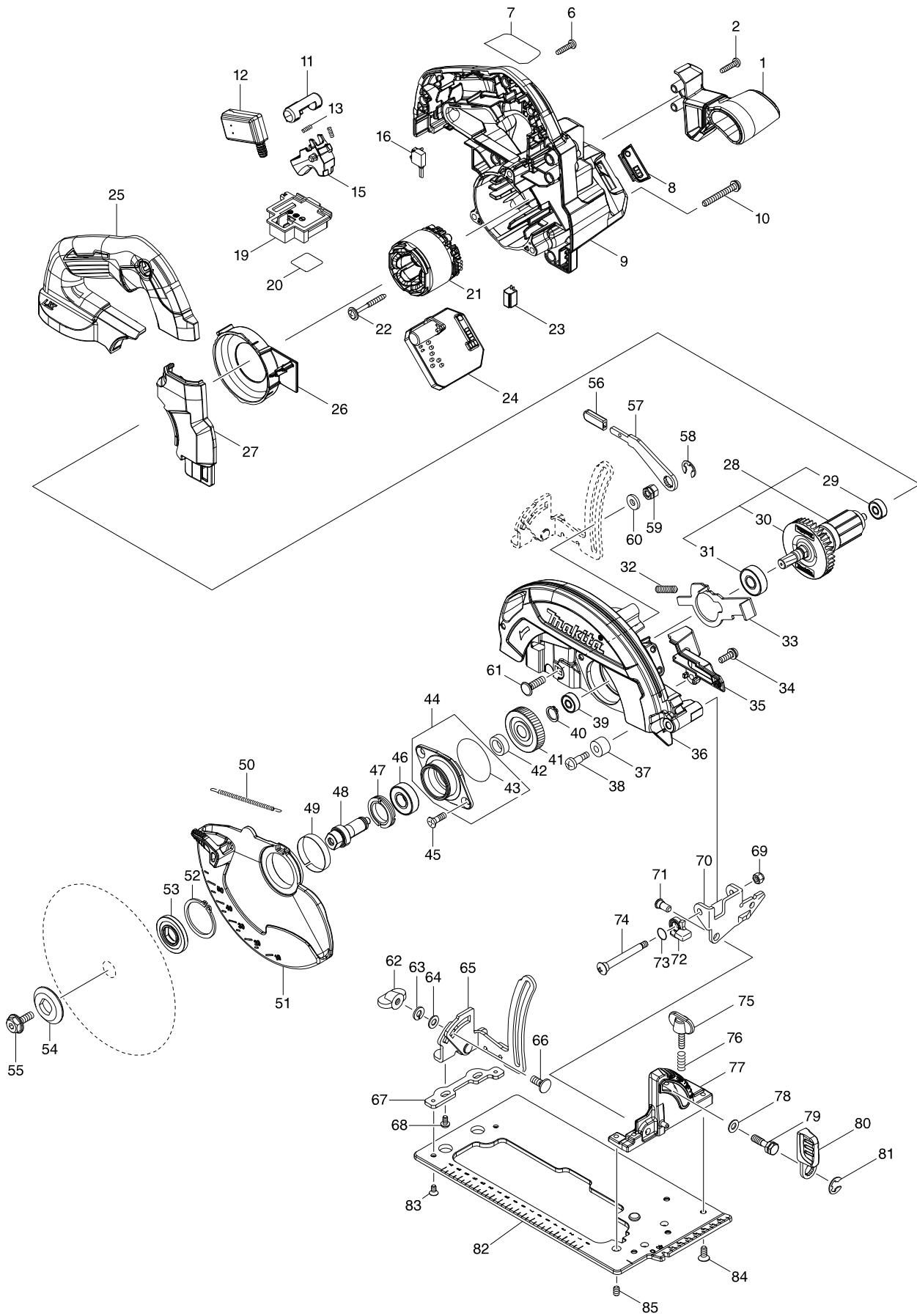


Model No. DHS660 165MM CORDLESS CIRCULAR SAW



Model No. DHS660 165MM CORDLESS CIRCULAR SAW

Item	Parts No.	Description	I/C	QTY	N/O	Opt. 1	Opt. 2	NOTE
001	458590-1	FRONT GRIP		1		40169390		
002	265995-6	TAPPING SCREW 4X18		1		73181500		
006	265995-6	TAPPING SCREW 4X18		7		73181500		
007	854N75-3	DHS660 NAME PLATE		1				
008	144251-6	INDICATION PLATE COMPLETE		1		83100090		
009	140C48-9	MOTOR HOUSING COMPLETE		1		84679900		
C10	263005-3	RUBBER PIN 6		2		40169390		
010	911263-2	PAN HEAD SCREW M5X40		3		73181500		
011	419704-7	LOCK OFF BUTTON		1				
012	651083-9	SWITCH C3XA-1PSPM		1		85365000		
013	231433-0	COMPRESSION SPRING 4		2		73209090		
015	458594-3	SWITCH LEVER		1		73182990		
016	632L80-6	SWITCH UNIT		1		85365090		
019	644809-6	TERMINAL		1				
020	854N80-0	DHS660 SERIAL NO. LABEL		1				
021	629362-3	STATOR		1		85030090		
022	251517-8	TAPPING SCREW 4X40		2		73181500		
023	620936-3	LED CIRCUIT		1		94051090		
024	620935-5	CONTROLLER		1	*	84679900		
024-1	620A72-1	CONTROLLER	<	1				
025	458584-6	HANDLE COVER		1		82078000		
026	458586-2	BAFFLE PLATE		1		73182990		
027	458592-7	COVER		1		73182990		
028	519527-4	ROTOR ASS'Y		1		85030090		
D10		INC. 29-31						
029	211012-0	BALL BEARING 606ZZ		1		84821090		
030	240045-8	FAN 55		1		84145190		
031	210059-1	BALL BEARING 6000DDW		1		84821090		
032	233117-6	COMPRESSION SPRING 6		1	*	73209090		
032-1	233342-9	COMPRESSION SPRING 6	<	1		73209090		
033	347400-6	SHAFT LOCK		1		73182990		
034	911223-4	PAN HEAD SCREW M5X16		1		73181500		
035	458589-6	DUCT		1		84679900		
036	140D07-9	BLADE CASE COMPLETE		1		73182990		
C10	213821-3	O-RING 26		1		40169320		
037	262511-5	RUBBER SLEEVE 6		1		73182990		
038	265115-2	+ PAN HEAD SCREW M5		1				
039	211012-0	BALL BEARING 606ZZ		1		84821090		
040	961052-5	RETAINING RING S-12		1		73182990		
041	226192-9	HELICAL GEAR 49		1		84834000		
042	257173-2	RING 12		1		73182990		
043	213512-6	O RING 39		1		40169320		
044	135993-3	BEARING BOX ASSEMBLY		1		84679900		
D10		INC. 43						
045	265034-2	+ COUNTERSUNK HEAD SCREW M5X		2		73181500		
046	211131-2	BALL BEARING 6001DDW		1		84821090		
047	285843-3	BEARING RETAINER 19-29		1		73182990		
048	327143-6	SPINDLE		1	*			

Item	Parts No.	Description	I/C	QTY	N/O	Opt. 1	Opt. 2	NOTE
048-1	327244-0	SPINDLE	<	1		73269099		
049	345469-4	THICKNESS RING		1				
050	231832-6	TENSION SPRING 3		1		73209090		
051	458680-0	SAFETY COVER		1		73182990		
052	961152-1	RETAINING RING (EXT) S-34		1				
053	224593-5	INNER FLANGE 35		1		84669200		
054	224409-4	OUTER FLANGE 35		1		73182990		
055	266925-0	HEX.SOCKET HEX.BOLT M6X18		1				
056	286036-5	CAP		1		40169390		
057	347399-5	LEVER PLATE		1		73182990		
058	257982-9	BOW STOP RING E-8		1				
059	264096-7	HEX. NUT M6		1				
060	267118-2	FLAT WASHER 6		1				
061	266737-1	FLAT HEAD SQ. NECK BOLT M6X20		1				
062	252631-3	THUMB NUT M6		1				
063	942151-2	SPRING WASHER 6		1		73182200		
064	941151-9	FLAT WASHER 6		1		73182200		
065	161899-9	DEPTH GUIDE COMPLETE		1		84679900		
066	265939-6	FLAT HEAD SQ. NECK BOLT M6X14		1				
067	347401-4	REAR GUIDE PLATE		1		73182990		
068	265648-7	PAN HEAD SCREW M4X8		2		73181500		
069	252103-8	HEX. LOCK NUT M5-8		1		73181500		
070	345590-9	ANGULAR GUIDE		1				
071	256480-0	SHOULDER PIN 6-7		1		73182990		
072	318823-5	STOPPER		1				
073	213977-2	O RING 7		1		40169320		
074	266734-7	+ TRUSS HEAD SCREW M5		1				
075	251896-4	SCREW M5X20		1				
076	231007-7	COMPRESSION SPRING 6		1				
077	319715-1	ANGULAR PLATE		1		73182990		
078	941151-9	FLAT WASHER 6		1		73182200		
079	266735-5	HEX.BOLT M6X20		1				
080	271446-9	LEVER 45		1		73182990		
081	257982-9	BOW STOP RING E-8		1				
082	347398-7	BASE		1		73182990		
083	265085-5	+ COUNTERSUNK HEAD SCREW M4X		2				
084	912212-2	COUNTERSUNK HEAD SCREW M5X12		4		73181500		
085	266436-5	H.S.SET SCREW(FLAT POINT)M5X8		3		73181500		
A01	783203-8	HEX. WRENCH 5		1		82041120		
A02	B-63018	TCT BLADE 165X25T WOOD EFFICUT		1				
A03	164095-8	GUIDE RULE		1		84679900		
A04	199230-9	DUST NOZZLE SET		1				
C10	911233-1	PAN HEAD SCREW M5X20		1		73181500		
A05B	817N33-0	DHS660RFJ INDICATION LABEL		1				
A06B	817N34-8	DHS660RFJ PLASTIC CASE LABEL		2				
A07B	821551-8	CONNECTOR PLASTIC CASE (TYPE3)		1		85369090		
C10	453974-8	LATCH		4				
A08B	839752-4	INNER TRAY		1				

