

Satisfy Professional's Needs



Cordless Steel Rod Cutter DSC251



Excellent flush cutting

Cut at 3.5mm from the surface

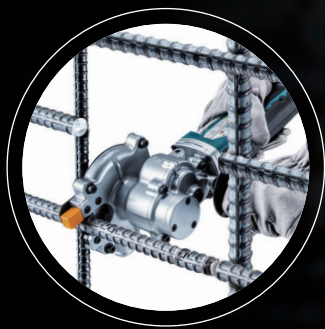
New blade



Easy installation of nuts
without deburring

Cutting capacity range of
10 - 25 mm standard rebar

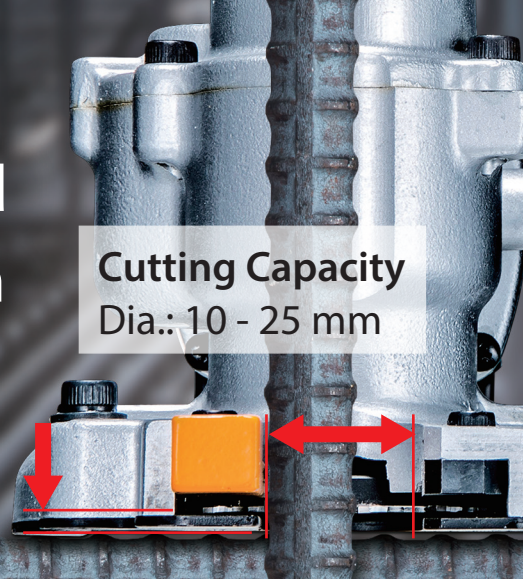




Rebar and threaded rod flush cut at 3.5mm from the surface

Cutting Capacity
Dia.: 10 - 25 mm

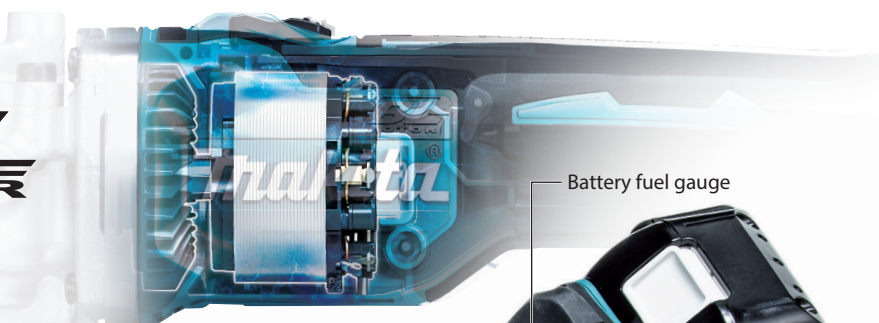
3.5mm



ADT + BL MOTOR

Automatically changes the cutting speed according to load condition for an optimum operation

High power
Brushless Motor



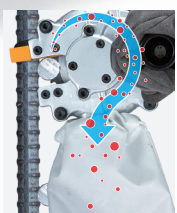
Highly visible heavy-duty fluorescent material guide



Dust bag holder

Battery fuel gauge

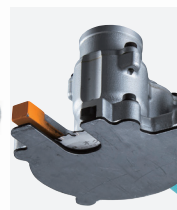
Removable Dust Cover



Dust bag for collection of metal dust and shavings.



Three position adjustable side handle for operator comfort and convenience.



Surface treatment of base cover prevents abrasion

Accessories

TCT Saw Blade
Blade Diameter 110mm



Part No.
SC09003260
SC09003261 (North America)

Cutting Capacity SD345(490N/mm ²)	Work volume on a single full battery charge
D25	about 50 cuts
D19	about 90 cuts
D16	about 135 cuts
D13	about 200 cuts
D10	about 300 cuts

(with BL1850B)

Cordless Steel Rod Cutter

Carrying Case

Standard Equipment :

TCT Saw Blade, Side Grip, Hex Wrench, Dust Bag, Battery, Charger

DSC251

Blade Diameter	110 mm (4.3")
Cutting Capacity	Dia.: 10 - 25 mm (3/8" - 1")
No load speed (rpm)	2,200
Vibration Level	Cutting Rebar: 2.5 m/s ² or less
Sound Pressure Level	78dB(A)
Dimensions (L x W x H)	471x137x139mm (18-17/32"x5-25/64"x5-15/32")
Net weight	4.0 kg (8.82 lbs.)

The weight may differ depending on the attachment(s), including the battery cartridge. The lightest and heaviest combination, according to EPTA-Procedure 01/2014. Items of standard equipment and specifications may vary by country or area.

Makita Corporation

3-11-8 Sumiyoshi-cho, Anjo, Aichi, 446-8502 Japan

PRINTED IN JAPAN 201901