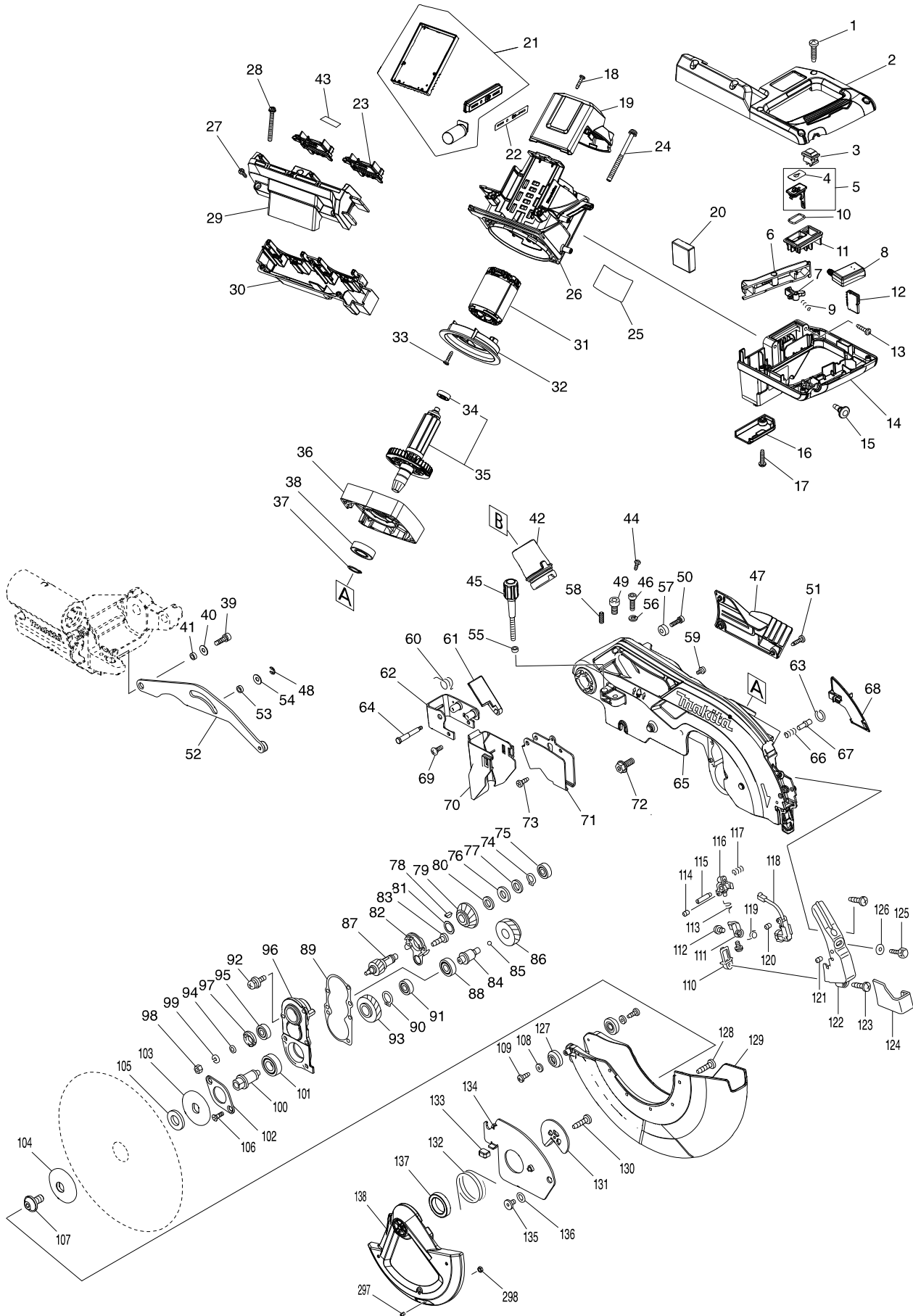
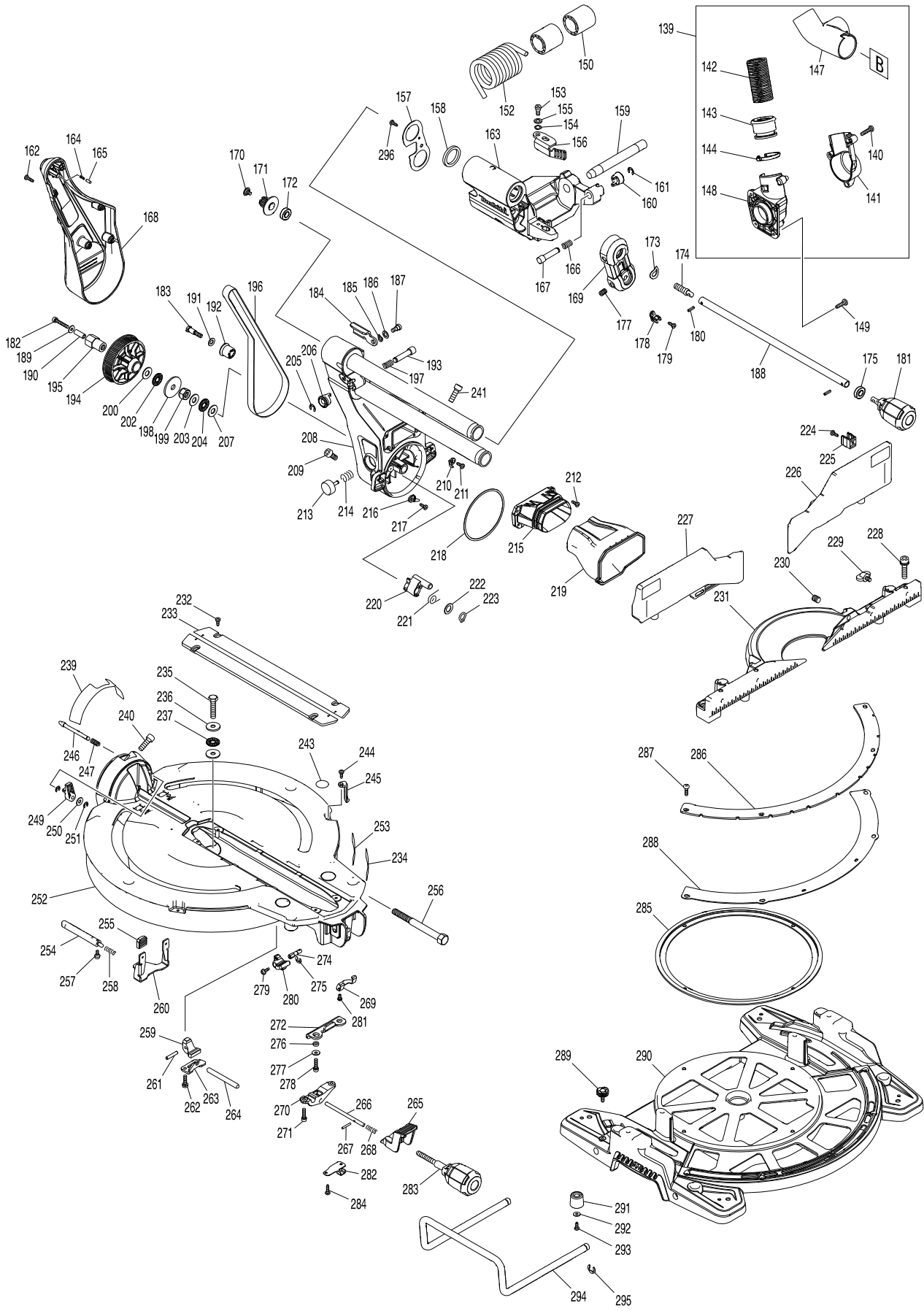


# Model No. DLS111 260MM DC SLIDE CPD. MITER SAW



# Model No. DLS111 260MM DC SLIDE CPD. MITER SAW



**Model No. DLS111 260MM DC SLIDE CPD. MITER SAW**

Item	Parts No.	Description	I/C	QTY	N/O	Opt. 1	Opt. 2	NOTE
001	265995-6	TAPPING SCREW 4X18		6		73181500		
002	183H70-3	HANDLE SET		1		84669200		
C10	810486-8	CAUTION LABEL		1		39199090		
D10		INC. 14						
003	632L09-2	SWITCH UNIT		1		85366990		
004	813T75-8	CAP LABEL		1	*			
004-1	818H48-4	CAP LABEL	<	1				
005A	183H92-3	CAP SET		1	*	39269099		
D10		INC. 4			*			
005B	183H92-3	CAP SET		1	*	39269099		
D10		INC. 4			*			
005C	183J85-2	CAP SET		1	*	73182990		
005D	183J85-2	CAP SET		1	*	73182990		
D10		INC. 4			*			
005-1A	183J85-2	CAP SET	O	1	*	73182990		
D10		INC. 4			*			
005-1B	183J85-2	CAP SET	O	1	*	73182990		
D10		INC. 4			*			
005-1C	140G30-2	CAP COMPLETE	<	1				
005-1D	140G30-2	CAP COMPLETE	<	1				
D10		INC. 4						
005-2A	140G30-2	CAP COMPLETE	<	1				
D10		INC. 4						
005-2B	140G30-2	CAP COMPLETE	<	1				
D10		INC. 4						
006	457935-0	SWITCH LEVER		1		39269099		
007	416356-5	LOCK-OFF LEVER		1		73182990		
008	651083-9	SWITCH C3XA-1PSPM		1		85365000		
009	231026-3	COMPRESSION SPRING 4		1		73209090		
010A	213275-4	O RING 18		1	*	40169320		
010B	213275-4	O RING 18		1	*	40169320		
010C	213218-6	O RING 16		1		40169320		
010D	213218-6	O RING 16		1		40169320		
010-1A	213218-6	O RING 16	<	1		40169320		
010-1B	213218-6	O RING 16	<	1		40169320		
011	458079-9	SWITCH COVER		1		39269099		
012	620750-7	SUB CONTROLLER		1		84679900		
013	265995-6	TAPPING SCREW 4X18		3		73181500		
014	183H70-3	HANDLE SET		1		84669200		
C10	810486-8	CAUTION LABEL		1		39199090		
D10		INC. 2						
015	451037-4	SWITCH BUTTON		1		40169390		
016	451000-7	LEAD COVER HOLDER		1		84679900		
017	265995-6	TAPPING SCREW 4X18		1		73181500		
018	265995-6	TAPPING SCREW 4X18		2		73181500		
019	457933-4	REAR COVER		1		73262090		
020	620742-6	POWER SUPPLY CIRCUIT		1		94059900		
021	620728-0	CONTROLLER		1				

Item	Parts No.	Description	I/C	QTY	N/O	Opt. 1	Opt. 2	NOTE
022	813T74-0	INDICATION LABEL		1				
023	643874-2	TERMINAL		2		73182990		
024	911948-0	PAN HEAD SCREW M6X80 WITH WR		4		73181500		
025	853T07-3	DLS111 NAME PLATE		1				
026	457906-7	MOTOR HOUSING		1		73262090		
027	265995-6	TAPPING SCREW 4X18		3		73181500		
028	911273-9	PAN HEAD SCREW M5X50		2		73181500		
029	183H65-6	BATTERY HOUSING SET		1		39269099		
C10	263005-3	RUBBER PIN 6		4		40169390		
D10		INC. 30						
030	183H65-6	BATTERY HOUSING SET		1		39269099		
C10	263005-3	RUBBER PIN 6		4		40169390		
D10		INC. 29						
031	629282-1	STATOR		1		85030090		
032	457934-2	BAFFLE PLATE		1		73262090		
033	265995-6	TAPPING SCREW 4X18		2		73181500		
034	211021-9	BALL BEARING 607LLB		1		84821090		
035	519454-5	ROTOR ASS'Y		1	*	85030090		
D10		INC. 34			*			
035-1	519454-5	ROTOR ASS'Y	O	1		85030090		
D10		INC. 34						
036	319591-3	MOTOR BRACKET		1		84679900		
037	961057-5	RETAINING RING S-17		1		73182990		
038	210301-0	BALL BEARING 6003DDW		1		84821090		
039	922331-6	HEX. SOCKET HEAD BOLT M6X20		1		73181500		
040	253804-1	FLAT WASHER 6		1		84679900		
041	257163-5	RING 6		1		73182990		
042	457704-9	DUST NOZZLE		1		40169390		
043	853T14-6	DLS111 SERIAL NO. LABEL		1				
044	266026-4	TAPPING SCREW BIND CT 4X12		1		73181500		
045	251554-2	THUMB SCREW M6X40		1		73181500		
046	922332-4	HEX. SOCKET HEAD BOLT M6X20		1		73181500		
047	457667-9	LOGO PLATE		1		73182990		
048	961018-5	STOP RING E-5		1		73182990		
049	251547-9	HEX.SOCKET HEAD BOLT M8X25		1		73181500		
050	922226-3	HEX. SOCKET HEAD BOLT M5X18		1		73181500		
051	266034-5	TAPPING SCREW CT 4X16		3		73181500		
052	144529-7	LINK PLATE COMPLETE		1		73182990		
053	257163-5	RING 6		1		73182990		
054	253804-1	FLAT WASHER 6		1		84679900		
055	262001-8	URETHANE RING 5		1	*	73182990		
055-1	262190-9	URETHANE RING 5	<	1				
056	942151-2	SPRING WASHER 6		1		73182200		
057	257785-1	SLEEVE 6		1		73182990		
058	266321-2	H.S.SET SCREW(FLAT POINT)M6X16		1		73181500		
059	911114-9	PAN HEAD SCREW M4X10		2		73181500		
060	232412-1	TORSION SPRING 11		1		73209090		
061	457764-1	DUST GUIDE PLATE		1		73182990		

Item	Parts No.	Description	I/C	QTY	N/O	Opt. 1	Opt. 2	NOTE
062	161647-6	GUARD HOLDER		1		84679900		
063	231928-3	RING SPRING 8		1		73209090		
064	251544-5	SHOULDER HEX. BOLT M4		1		73181500		
065	144774-4	BLADE CASE COMPLETE		1		84669200		
C10	263005-3	RUBBER PIN 6		3		40169390		
C20	810064-4	LASER BEAM CAUTION LABEL		1				
C30	810354-5	LASER BEAM LABEL		1				
066	231240-1	COMPRESSION SPRING 7		1		73209090		
067	256633-1	PIN 6		1		73182990		
068	457659-8	LEAD COVER		1		73182990		
069	265028-7	+ PAN HEAD SCREW M4X11		1				
070	422155-5	GUARD		1		73182990		
071	347215-1	GUARD PLATE		1		84679900		
072	266283-4	HEX. SOCKET HEX. BOLT M8X20		1				
073	266020-6	TAPPING SCREW 4X12		1		73181500		
074	961052-5	RETAINING RING S-12		1		73182990		
075	210005-4	BALL BEARING 608DDW		1		84821090		
076	261104-5	RUBBER WASHER 12		1		73182990		
077	253744-3	FLAT WASHER 12		1		84679900		
078	254001-2	WOODRUFF KEY 4		1		84679900		
079	227550-2	SPIRAL BEVEL GEAR 32		1		84679900		
080	253744-3	FLAT WASHER 12		1		84679900		
081	253313-0	THIN WASHER 14		1		84679900		
082	451002-3	GREASE HOLDER		1		84679900		
083	266026-4	TAPPING SCREW BIND CT 4X12		2		73181500		
084	325643-0	GEAR SHAFT		1		84831099		
085	216024-8	STEEL BALL 4		1	*	73182990		
085-1	216049-2	STEEL BALL 4	O	1				
086	227702-5	HELICAL GEAR 27		1		84679900		
087	227701-7	HELICAL GEAR 14		1		84679900		
088	210067-2	BALL BEARING 6000ZZ		1		84821090		
089	442147-8	GASKET		1		40169390		
090	961055-9	RETAINING RING S-15		1		73182990		
091	210005-4	BALL BEARING 608DDW		1		84821090		
092	911223-4	PAN HEAD SCREW M5X16		3		73181500		
093	227703-3	HELICAL GEAR 28		1		84679900		
094	267010-2	FLAT WASHER 5		1		73182200		
095	210005-4	BALL BEARING 608DDW		1		84821090		
096	158957-0	BEARING BOX COMPLETE		1		84833000		
C10	263002-9	RUBBER PIN 4		1		40169390		
097	285847-5	BEARING RETAINER 14-23		1		84679900		
098	931202-6	HEX. NUT M5		1		73181500		
099	942101-7	SPRING WASHER 5		1		73182200		
100	325644-8	SPINDLE		1		84679900		
101	211236-8	BALL BEARING 6002DDW		1		84821090		
102	285732-2	BEARING RETAINER 51		1		84679900		
103	224428-0	INNER FLANGE 46		1				
104	224429-8	OUTER FLANGE 46		1				

Item	Parts No.	Description	I/C	QTY	N/O	Opt. 1	Opt. 2	NOTE
105	257060-5	RING 15.8		1		73182990		
106	265034-2	+ COUNTERSUNK HEAD SCREW M5X		2		73181500		
107	266755-9	HEX.SOCKET HEAD BOLT M10X20		1				
108	941051-3	FLAT WASHER 4		2		73182200		
109	266020-6	TAPPING SCREW 4X12		2		73181500		
110	418104-8	LENS		1		90029000		
111	419378-4	BLOCK B		1		84679900		
112	911003-8	PAN HEAD SCREW M3X6		2		73181500		
113	231664-1	TORSION SPRING 9		1		73209090		
114	266318-1	H.S.SET SCREW(FLAT POINT)M4X6		1		73181500		
115	266306-8	SHOULDER SCREW M5		1		73181500		
116	419379-2	BLOCK C		1		84679900		
117	233471-8	COMPRESSION SPRING 6		1		73209090		
118	638651-5	LASER CIRCUIT COMPLETE		1		84679900		
119	231664-1	TORSION SPRING 9		1		73209090		
120	266318-1	H.S.SET SCREW(FLAT POINT)M4X6		1		73181500		
121	266229-0	H.S.SET SCREW(CUP POINT)M5X8		2		73181500		
122	457660-3	LASER COVER		1		73182990		
123	266034-5	TAPPING SCREW CT 4X16		2		73181500		
124	457664-5	PROTECTOR		1		73182990		
125	265753-0	THUMB SCREW M5X24		1		73181500		
126	253807-5	FLAT WASHER 5		1		84679900		
127	424193-3	ROLLER		2		84679900		
128	266385-6	TAPPING SCREW 4X14		3		73181500		
129	457499-4	SEAFTY COVER B		1		73182990		
130	266385-6	TAPPING SCREW 4X14		1		73181500		
131	347213-5	CENTER PLATE		1		73182990		
132	231634-0	TORSION SPRING 45		1		73209090		
133	424190-9	CUSHION		1		40169390		
134	347214-3	CENTER COVER		1		84679900		
135	265985-9	HEX.SOCKET HEAD BOLT M6		1		73181500		
136	253932-2	WAVE WASHER 10		1		84679900		
137	210168-6	BALL BEARING 6805DDW		1		84821090		
138A	457498-6	SAFETY COVER A		1	*	84679900		
138B	457498-6	SAFETY COVER A		1	*	84679900		
138-1A	458437-9	SAFETY COVER A	S	1				
138-1B	458437-9	SAFETY COVER A	S	1				
138-1C	458437-9	SAFETY COVER A		1				
138-1D	458437-9	SAFETY COVER A		1				
139	126751-8	DUST NOZZLE ASSEMBLY		1		84679900		
D10		INC. 140-144,147,148						
140	265995-6	TAPPING SCREW 4X18		3		73181500		
141	183H71-1	HOSE CONNECTOR SET		1		85369090		
D10		INC. 148						
142	245041-1	HOSE 28-0.45		1		40169390		
143	457672-6	SLEEVE		1		73182990		
144	457673-4	STOPPER		1		73182990		
147	458198-1	HOSE JOINT		1		39269099		

Item	Parts No.	Description	I/C	QTY	N/O	Opt. 1	Opt. 2	NOTE
148	183H71-1	HOSE CONNECTOR SET		1		85369090		
D10		INC. 141						
149	266034-5	TAPPING SCREW CT 4X16		3		73181500		
150	457665-3	SLEEVE 17		2		73182900		
152	233537-4	TORSION SPRING 35		1				
153	251267-5	+ PAN HEAD SCREW M6		1		73181500		
154	253948-7	WAVE WASHER 8		1		84679900		
155	253835-0	FLAT WASHER 8		1		84679900		
156	347221-6	STOPPER ARM		1		73182990		
157	347222-4	FRONT ARM PLATE		1		73182990		
158	262076-7	FELT RING 30		2				
159	326994-4	ROD 16		1		73182990		
160	271437-0	KNOB 22		1		40169390		
161	961013-5	STOP RING E-7		1		73182990		
162	266034-5	TAPPING SCREW CT 4X16		4		73181500		
163	144531-0	FRONT ARM COMPLETE		1		84679900		
C10	263005-3	RUBBER PIN 6		2		40169390		
164	233151-6	COMPRESSION SPRING 4		1		73209090		
165	256364-2	PIN 4		1		73182990		
166	232384-0	COMPRESSION SPRING 10		1		73209090		
167	326977-4	STOPPER PIN		1		73182990		
168	457653-0	ARM COVER		1		84679900		
169	144658-6	HOLDER COMPLETE		1		82078000		
C10	812X89-8	INDICATION LABEL		1				
170	265008-3	+ FLAT HEAD SCREW M5		1		73181500		
171	222191-9	PULLEY 17-19.3		1		84679900		
172	210167-8	BALL BEARING 6900LLB		1		84821090		
173	267804-5	WAVE WASHER 15		1		73182200		
174	326975-8	SHAFT		1		84831099		
175	210167-8	BALL BEARING 6900LLB		1		84821090		
177	913416-9	SET SCREW M8X12		2		73181500		
178	416536-3	WRENCH HOLDER		1				
179	266026-4	TAPPING SCREW BIND CT 4X12		1		73181500		
180	951107-4	SPRING PIN 4-14		2				
181	273016-0	GRIP 50 B		1		40169390		
182	265919-2	HEX. SOCKET HEAD BOLT M5X30		1				
183	251545-3	SHOULDER HEX. BOLT M6		1		73181500		
184	144657-8	STOPPER LEVER COMPLETE		1		82079090		
C10	812X87-2	INDICATION LABEL		1				
185	253948-7	WAVE WASHER 8		1		84679900		
186	253835-0	FLAT WASHER 8		1		84679900		
187	251267-5	+ PAN HEAD SCREW M6		1		73181500		
188	326987-1	PIN 9-365		1		73182990		
189	253194-2	FLAT WASHER 5		1		84679900		
190	257426-9	SLEEVE 5		1		73182990		
191	253165-9	FLAT WASHER 8		1		84679900		
192	457666-1	SLEEVE 20		1		73182990		
193	326977-4	STOPPER PIN		1		73182990		

Item	Parts No.	Description	I/C	QTY	N/O	Opt. 1	Opt. 2	NOTE
194	222192-7	PULLEY 17-87.8		1		84679900		
195	326980-5	HEX.LOCK NUT M10-19		1		73181600		
196	225101-5	SYNCHRO BELT 15-756		1		40169390		
197	232384-0	COMPRESSION SPRING 10		1		73209090		
198	253388-9	FLAT WASHER 10		1		84679900		
199	252244-0	HEX.LOCK NUT M10-17		1		73181500		
200	253024-7	FLAT WASHER 10		1		84679900		
202	216413-7	THRUST NEEDLE CAGE 1024		1		73182200		
203	253024-7	FLAT WASHER 10		1		84679900		
204	216413-7	THRUST NEEDLE CAGE 1024		1		73182200		
205	961013-5	STOP RING E-7		1		73182990		
206	271437-0	KNOB 22		1		40169390		
207	253024-7	FLAT WASHER 10		1		84679900		
208	144530-2	ARM COMPLETE		1		84679900		
C10	812X88-0	INDICATION LABEL		1				
209	251547-9	HEX.SOCKET HEAD BOLT M8X25		1		73181500		
210	457871-0	INDICATION PLATE R		1		73182990		
211	266026-4	TAPPING SCREW BIND CT 4X12		1		73181500		
212	266034-5	TAPPING SCREW CT 4X16		4		73181500		
213	415208-7	RELEASE BUTTON		1		84679900		
214	233031-6	COMPRESSION SPRING 12		1		73209090		
215	457654-8	DUST GUIDE HOLDER		1		84679900		
216	457870-2	INDICATION PLATE L		1		73182990		
217	266026-4	TAPPING SCREW BIND CT 4X12		1		73181500		
218	253389-7	WASHER 94		1		84679900		
219	422156-3	DUST GUIDE		1		84679900		
220	319593-9	STOPPER		1		84679900		
221	231646-3	TORSION SPRING 14		1		73209090		
222	253744-3	FLAT WASHER 12		1		84679900		
223	961052-5	RETAINING RING S-12		1		73182990		
224	266026-4	TAPPING SCREW BIND CT 4X12		2		73181500		
225	457668-7	HOLDER		2		82078000		
226	144650-2	UPPER FENCE R COMPLETE		1		84679900		
C10	810503-4	CAUTION LABEL		1		39199090		
227	144646-3	UPPER FENCE L COMPLETE		1		84679900		
C10	810503-4	CAUTION LABEL		1		39199090		
228	922458-2	H.S.H.BOLT M8X35 WITH WR		4		73181500		
229	251887-5	SCREW M6X10		2		73181500		
230	251561-5	H.SOCKET HEAD SET SCREW M10X1		2		73181500		
231	319565-4	GUIDE FENCE		1		84679900		
232	266026-4	TAPPING SCREW BIND CT 4X12		4		73181500		
233	451013-8	KERF BOARD		2		84679900		
235	265442-7	HEX. BOLT M8X40		1		73181500		
236	253852-0	FLAT WASHER 8		2		84679900		
237	216413-7	THRUST NEEDLE CAGE 1024		1		73182200		
239	812X86-4	BEVEL SCALE LABEL		1				
240	251547-9	HEX.SOCKET HEAD BOLT M8X25		1		73181500		
241	251547-9	HEX.SOCKET HEAD BOLT M8X25		1		73181500		



Item	Parts No.	Description	I/C	QTY	N/O	Opt. 1	Opt. 2	NOTE
243	813L22-1	CAUTION LABEL		2				
244	266026-4	TAPPING SCREW BIND CT 4X12		2		73181500		
245	457702-3	INDICATION PLATE		2		73182990		
246	326970-8	LOCK PIN 8		1		73182990		
247	234122-6	COMPRESSION SPRING 6		1		73209090		
249	457657-2	LEVER 25		1		73182990		
250	253804-1	FLAT WASHER 6		1		84679900		
251	961018-5	STOP RING E-5		2		73182990		
252	144654-4	TURN BASE COMPLETE		1		84679900		
D10		INC. 239,243,253						
253	812X85-6	CAUTION LABEL		1				
254	326973-2	ROD 12		1		73182990		
255	286039-9	CAP		2		39269099		
256	326976-6	CENTER SHAFT		1		84831099		
257	911113-1	PAN HEAD SCREW M4X10 WITH WR		2		73181500		
258	231325-3	COMPRESSION SPRING 6		1		73209090		
259	310803-7	TURN STOPPER		1		84679900		
260	347217-7	LEVER PLATE		1		73182990		
261	256186-0	PIN 5		1		73182990		
262	911231-5	PAN HEAD SCREW M5X20		2		73181500		
263	347219-3	STOPPER HOLDER		1		82078000		
264	326971-6	LOCK ROD		1		73182990		
265	457656-4	LOCK LEVER		1		84679900		
266	326969-3	LOCK PIN 6		1		73182990		
267	256158-5	PIN 3		1		73182990		
268	231325-3	COMPRESSION SPRING 6		1		73209090		
269	347237-1	CAM PLATE		1		73182990		
270	319592-1	PIN HOLDER		1		82078000		
271	922231-0	HEX. SOCKET HEAD BOLT M5X20		2		73181500		
272	347216-9	LOCK PLATE		1		73182990		
274	326972-4	ROD 6		1		73182990		
275	961011-9	STOP RING E-4		1		73182990		
276	257425-1	RING 5		2		73182990		
277	253194-2	FLAT WASHER 5		2		84679900		
278	922231-0	HEX. SOCKET HEAD BOLT M5X20		2		73181500		
279	911113-1	PAN HEAD SCREW M4X10 WITH WR		1		73181500		
280	144656-0	LEVER 25 COMPLETE		1		82079090		
C10	263005-3	RUBBER PIN 6		1		40169390		
281	911008-8	PAN HEAD SCREW M3X8		1		73181500		
282	345272-3	LOCK LEVER PLATE		1		73182990		
283	273015-2	GRIP 50A		1		40169390		
284	266026-4	TAPPING SCREW BIND CT 4X12		2		73181500		
285	457655-6	SLIDE PLATE		1		73182990		
286A	347223-2	MITER SCALE PLATE		1	*	84679900		
286B	347223-2	MITER SCALE PLATE		1	*	84679900		
286-1A	347412-9	MITER SCALE PLATE	<	1				
286-1B	347412-9	MITER SCALE PLATE	<	1				
286-1C	347412-9	MITER SCALE PLATE		1				

Item	Parts No.	Description	I/C	QTY	N/O	Opt. 1	Opt. 2	NOTE
286-1D	347412-9	MITER SCALE PLATE		1				
287	251546-1	+ PAN HEAD SCREW M5		4	73181500			
288	347218-5	MITER LOCK PLATE		1	84679900			
289	265786-5	SCREW M5X16		2	73181500			
290A	319560-4	BASE		1	*	84679900		
290B	319560-4	BASE		1	*	84679900		
290-1A	310891-4	BASE	O	1	84679900			
290-1B	310891-4	BASE	O	1	84679900			
290-1C	310891-4	BASE		1	84679900			
290-1D	310891-4	BASE		1	84679900			
291	421845-7	FOOT		4	84679900			
292	267195-4	FLAT WASHER 4		4	73182200			
293	266026-4	TAPPING SCREW BIND CT 4X12		4	73181500			
294	326978-2	HOLDER 200		2	82078000			
295	961015-1	STOP RING E-9		2	73182990			
296	266026-4	TAPPING SCREW BIND CT 4X12		1	73181500			
297	266318-1	H.S.SET SCREW(FLAT POINT)M4X6		1	73181500			
298A	931102-0	HEX. NUT M4		1	*	73181500		
298B	931102-0	HEX. NUT M4		1	*	73181500		
A01	122852-0	DUST BAG ASS'Y		1	39269099			
C10	410602-8	FASTENER		1	73182990			
A02	126617-2	WISE ASS'Y		1				
A03	762001-3	TRIANGULAR RULE		1	82031000			
A04	783208-8	HEX. WRENCH 2.5		1	73181500			
A05A	198906-5	WIRELESS UNIT SET		1	*			
A05B	198906-5	WIRELESS UNIT SET		1	*			
A05-1A	199393-1	WIRELESS UNIT SET		1				
A05-1B	199393-1	WIRELESS UNIT SET		1				
A06A	B-64668	TCT BLADE260X45T WOOD EFFICUT		1	84679900			
A06B	B-64668	TCT BLADE260X45T WOOD EFFICUT		1	84679900			
A07	781044-6	HEX. WRENCH 6		1				
A08B	***DC18RD	DC18RD TWO PORT FAST CHARGER		1				
D10		COMPO-PARTS						
A08D	***DC18RD	DC18RD TWO PORT FAST CHARGER		1				
D10		COMPO-PARTS						
A09B	198013-4	BATTERY BL1850B SET		2				
A09D	198013-4	BATTERY BL1850B SET		2				
A10B	450128-8	BATTERY COVER		2	39269099			
A10D	450128-8	BATTERY COVER		2	39269099			