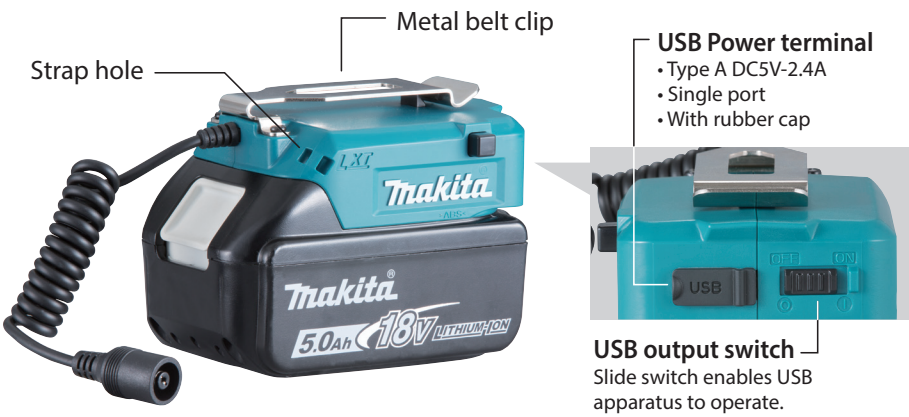


Accessories

Battery holder Powered by Makita Li-ion Battery



As a charger for smart phones



LXT

18V LITHIUM-ION

14.4V LITHIUM-ION



Part No. YL00000003

CXT

12Vmax LITHIUM-ION







Part No. YL00000004

Jacket Size



	size (in cm)	S	M	L	XL	2XL	3XL
■ DCJ205 / CJ105D	Length	68	69	71	75	78	82
	Shoulder	50.5	52.5	54.5	55.5	56.5	57.5
	Sleeve	63	64.5	66	67	68	69
	Chest	108	118	128	138	146	156
■ DCJ206 / CJ106D	Waist	102	112	122	132	140	150
	Length	72	73	74	75	76	77
	Shoulder	47.5	49.5	51.5	53.5	55.5	57.5
■ DCV202 / CV102D	Chest	114	120	126	132	138	144
	Waist	116	122	128	134	140	146

Longer continuous run time on a single full battery charge

Model No.	Battery holder	Li-ion Battery		Continuous run time Low / Medium / High	Net weight Jacket size L	Pockets
■ DCJ205			6.0Ah BL1860B	35 / 14 / 8.5 h with BL1860B	1.1kg (2.5 lbs.)	5
■ DCJ206			5.0Ah BL1850B		1.2kg (2.5 lbs.)	
■ DCV202			4.0Ah BL1840B	35 / 20 / 10 h with BL1860B	3.0Ah BL1830B	0.5kg (1.1 lbs.)
	2.0Ah BL1820B	1.5Ah BL1815N				
■ CJ105D			4.0Ah BL1041B	14 / 5.5 / 3.5 h with BL1041B	1.1kg (2.5 lbs.)	5
■ CJ106D			2.0Ah BL1021B		1.2kg (2.5 lbs.)	
■ CV102D			1.5Ah BL1016	14 / 7.5 / 4 h with BL1041B		0.5kg (1.1 lbs.)

The weight may differ depending on the attachment(s), including the battery cartridge. The lightest and heaviest combination, according to EPTA-Procedure 01/2014, are shown in the table.
Items of standard equipment and specifications may vary by country or area.

Makita Corporation

3-11-8 Sumiyoshi-cho, Anjo, Aichi, 446-8502 Japan

PRINTED IN JAPAN 201809

Satisfy Professional's Needs



Cordless Heated Jacket Series
DCJ205 / DCJ206 / DCV202 LXT
CJ105D / CJ106D / CV102D CXT



HEATED JACKET and VEST



HEATED JACKET and VEST



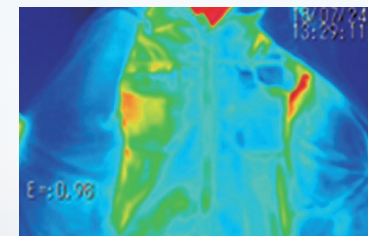
Max run time

7.0 h

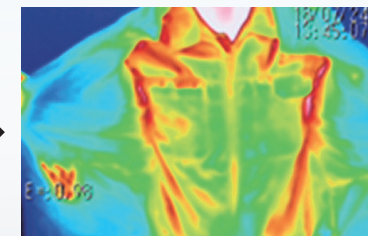
Mode : High
Battery : BL1850B

Heating effects

When wearing in a minus 5 degree C environment
(in High mode)



when switch is off



about 15 minutes after
switch-on

3 Heat settings

Continuous runtime on a single full
battery charge



Low



29h

Medium



11h

High



7h

with BL1850 (18V-5.0Ah Battery)

5 Heat zones

■ DCJ205 / CJ105D

■ DCJ206 / CJ106D

Left chest, right chest and back have each heating element.



4 Heat zones

■ DCV202 / CV102D

Left chest, right chest and back, neck have each heating element.



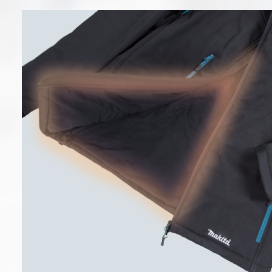
Wind and Water Resistance

prevents penetration of water such as
light rain.



Fleece lining

warms a body
even when
switch is off



■ Jacket type
DCJ205 / CJ105D



■ High-visibility type
DCJ206 / CJ106D



■ Vest type
DCV202 / CV102D



Washable and dryable

Detach the battery holder from the jacket or
vest before washing.



Features



Battery pocket

■ DCJ205 / CJ105D
■ DCJ206 / CJ106D
■ DCV202 / CV102D



Two-way zip fastener

■ DCJ205 / CJ105D
■ DCJ206 / CJ106D
■ DCV202 / CV102D



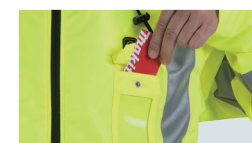
Pen pocket

■ DCJ205 / CJ105D



Detachable hood

■ DCJ206 / CJ106D



Name tag holder

■ DCJ206 / CJ106D



Retroreflective material

■ DCJ206 / CJ106D