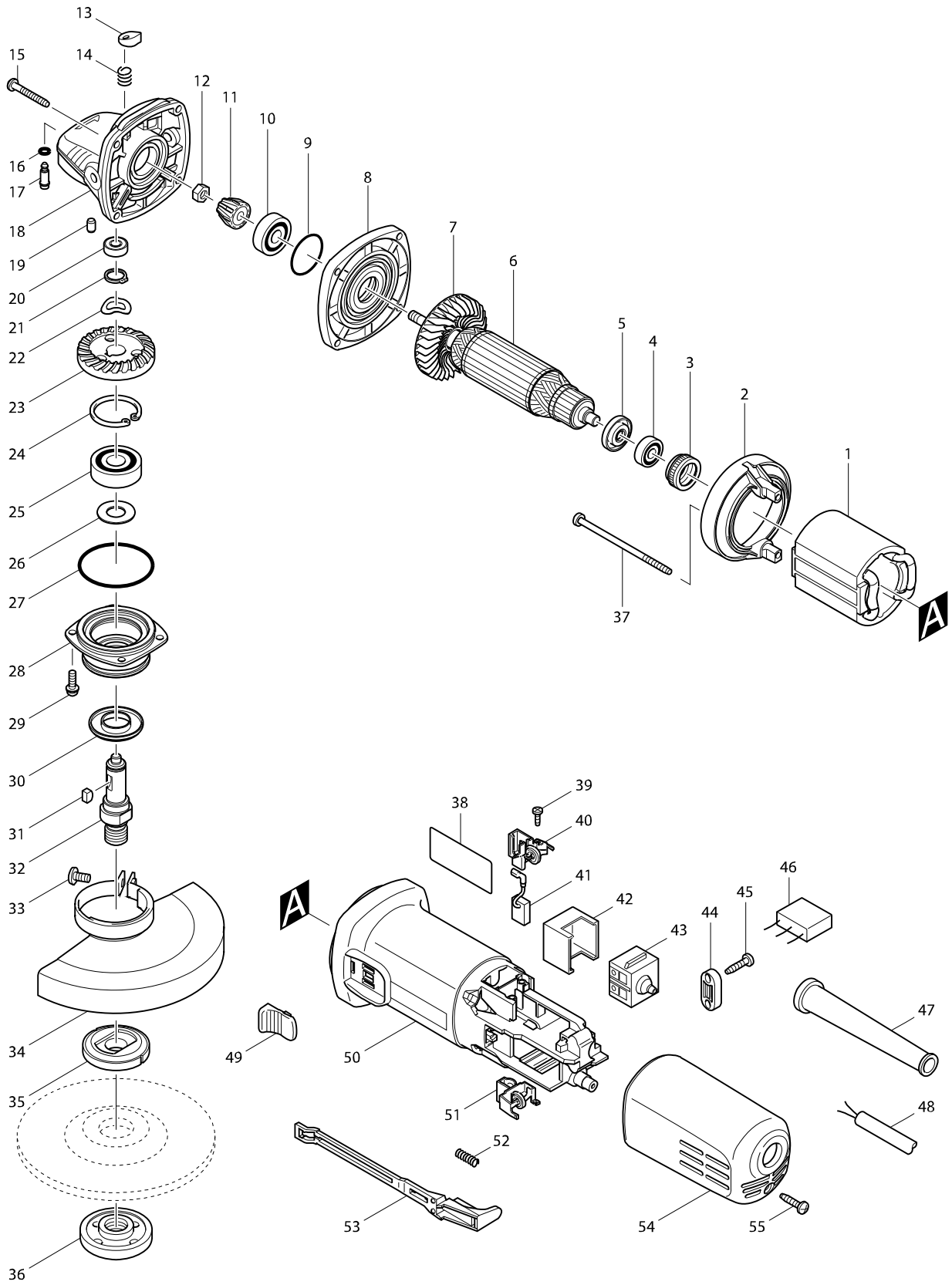


Model No. 9558NB 125MM ANGLE GRINDER



Model No. 9558NB 125MM ANGLE GRINDER

Item	Parts No.	Description	I/C	QTY	N/O	Opt. 1	Opt. 2	NOTE
001	621708-9	FIELD 220-240V		1	*			
001-1	627081-5	FIELD 220-240V	<	1				
002	418770-1	BAFFLE PLATE		1				
003	421868-5	LABYRINTH RUBBER RING 19		1				
004	211021-9	BALL BEARING 607LLB		1				
005-1	681636-0	INSULATION WASHER		1				
006	515613-9	ARMATURE ASS'Y 220-240V		1				
D10		INC. 4,5,7						
007	240076-7	FAN 56		1				
008	317821-6	GEAR HOUSING COVER		1				
009	213445-5	O-RING 26		1				
010-2	210042-8	BALL BEARING 629LLB		1				
011	227464-5	SPIRAL BEVEL GEAR 10		1				
012	252186-8	HEX. NUT M6		1				
013	417771-6	PIN CAP		1				
014	233376-2	COMPRESSION SPRING 8		1				
015	266361-0	TAPPING SCREW 4X30		4				
016	213960-9	O RING 5		1				
017	256486-8	SHOULDER PIN 4		1				
018	317814-3	GEAR HOUSING		1				
019	263002-9	RUBBER PIN 4		1				
020	210006-2	BALL BEARING 696ZZ		1				
021	961052-5	RETAINING RING S-12		1				
022	267794-2	WAVE WASHER 12		1				
023-1	227505-7	SPIRAL BEVEL GEAR 37		1				
024	962151-6	RETAINING RING R-32		1				
025	211129-9	BALL BEARING 6201DDW		1				
026	267238-2	FLAT WASHER 12		1				
027	213622-9	O RING 45		1				
028	317819-3	BEARING BOX		1				
029	265099-4	PAN HEAD SCREW M4X14		4				
030	345464-4	LABYRINTH RING		1				
031	254011-9	WOODRUFF KEY 4		1				
032-1	324489-1	SPINDLE		1				
033	265103-9	PAN HEAD SCREW M5X14		1				
034	125268-8	WHEEL COVER ASS'Y		1				
D10		INC. 33						
035-1	224415-9	INNER FLANGE 42		1				
036	224554-5	LOCK NUT 14-45		1				
037	266345-8	TAPPING SCREW 4X80		2				
038	861258-4	NAME PLATE 9558NB		1				
039	266007-8	TAPPING SCREW BIND PT 3X10		4				
040	643760-7	BRUSH HOLDER		1				
041	194074-2	CARBON BRUSH CB-325		1				
042	418729-8	SPACER		1				
043	650560-8	SWITCH DPX-2110-R		1	*			
043-1	651947-7	SWITCH 1247.0302	O	1				
044	687123-7	STRAIN RELIEF		1				

